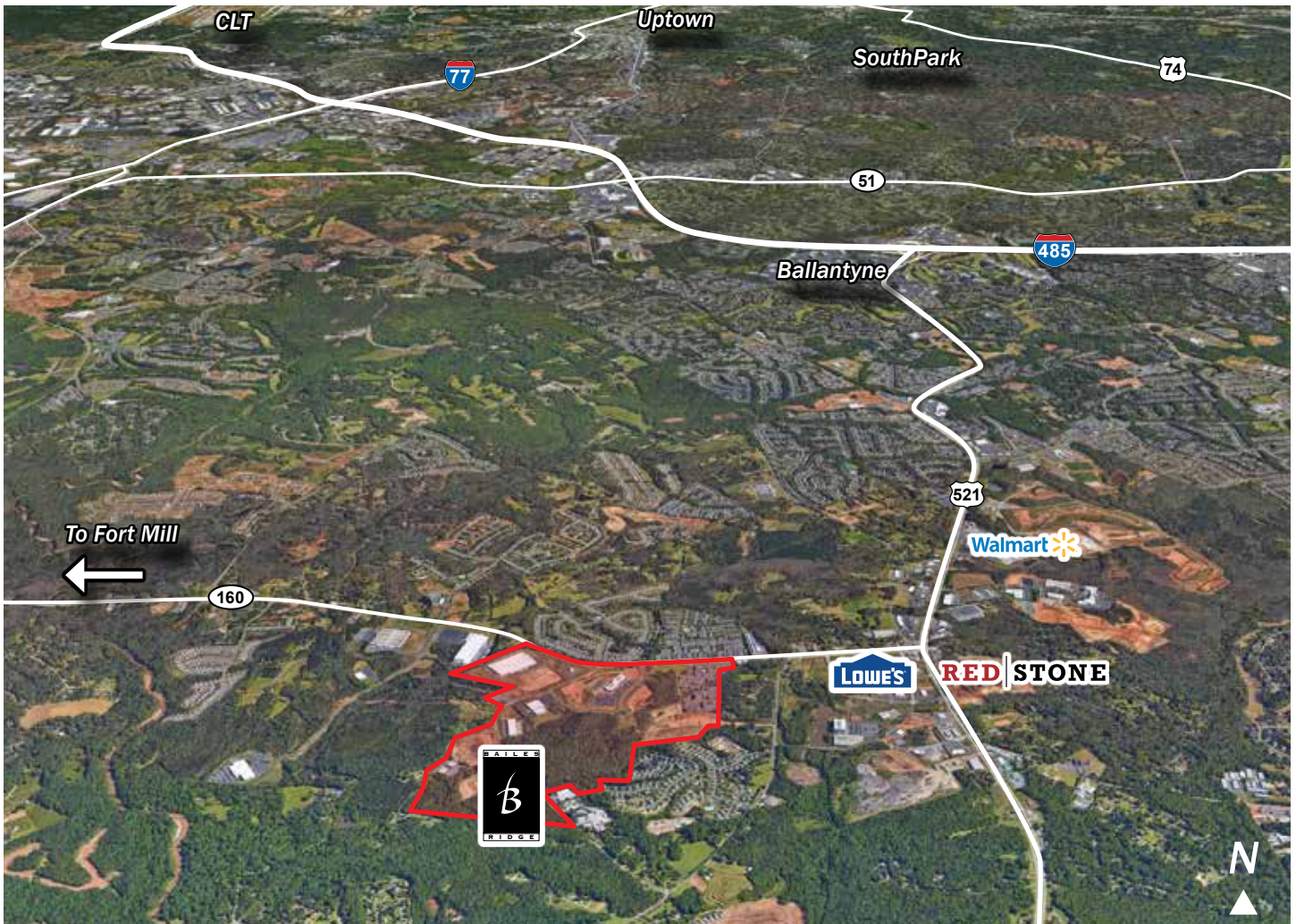


Land For Sale



# Bailes Ridge Corporate Park

Hwy 160 and Hwy 521, Lancaster County, SC 29707



## Land

- 2 - 80 acres of land available in northern Lancaster County, SC
- Planned Development District: Zoned General Commercial (B-3)
- Located on Highway 160; 1/2 mile west of Highway 521
- Minutes from I-485 and Ballantyne area
- Great access to south Charlotte, Fort Mill and Rock Hill
- Quality office park with protective covenants and architectural controls
- Water, sewer, electricity, natural gas and telecom are available

## For Sale

### Contact

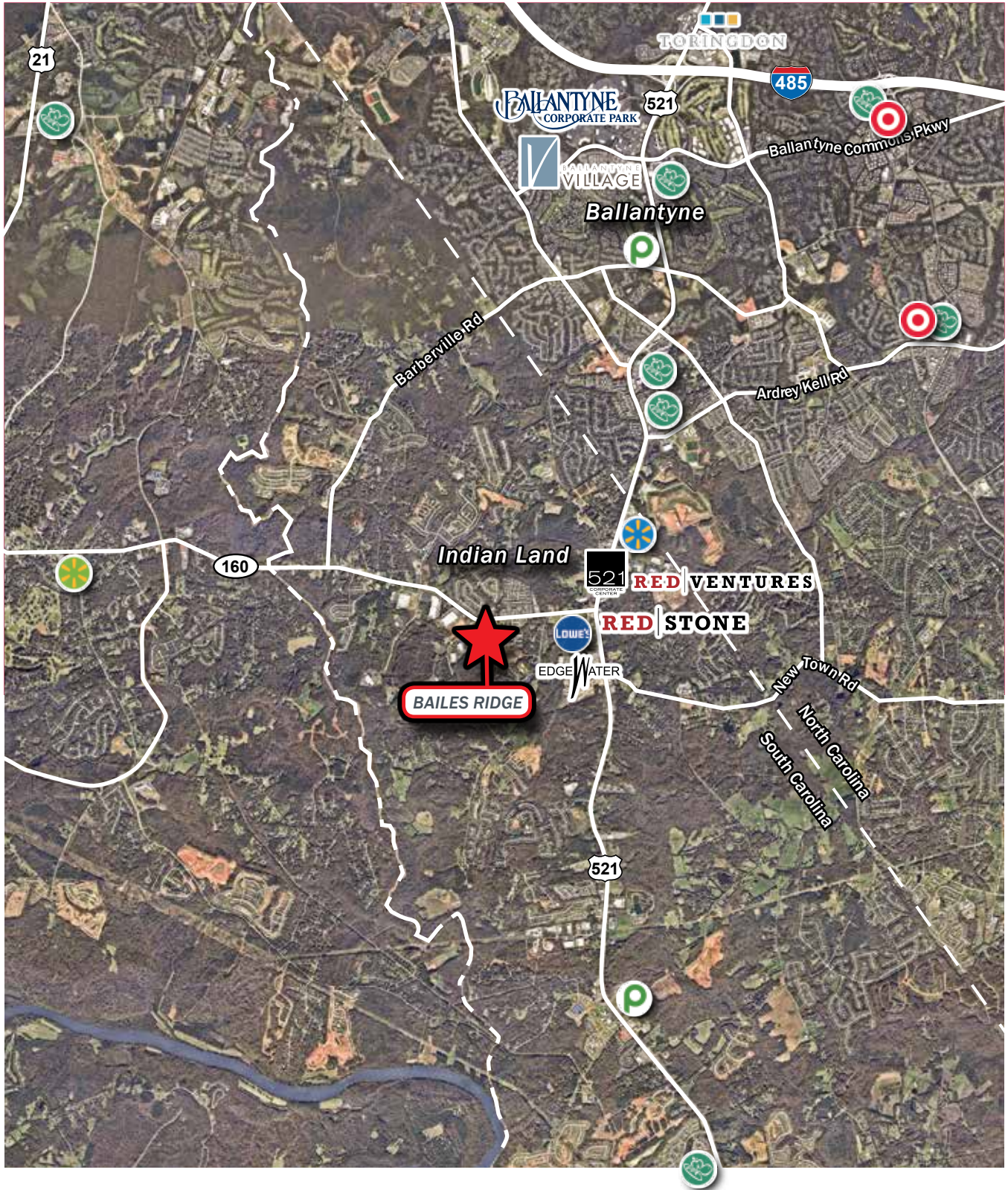
**Micheal Bilodeau**  
704.561.5253  
mbilodeau@mpvre.com

## Pricing

Call For Pricing

# Locator Map

**Bailes Ridge Corporate Park**  
Hwy 160 and Hwy 521, Lancaster County, SC 29707



# Master Plan

**Bailes Ridge Corporate Park**  
 Hwy 160 and Hwy 521, Lancaster County, SC 29707



## ► Park Photos

**Bailes Ridge Corporate Park**  
Hwy 160 and Hwy 521, Lancaster County, SC 29707



Honeywell Build-to-Suit



Park Sculpture



Movement Mortgage