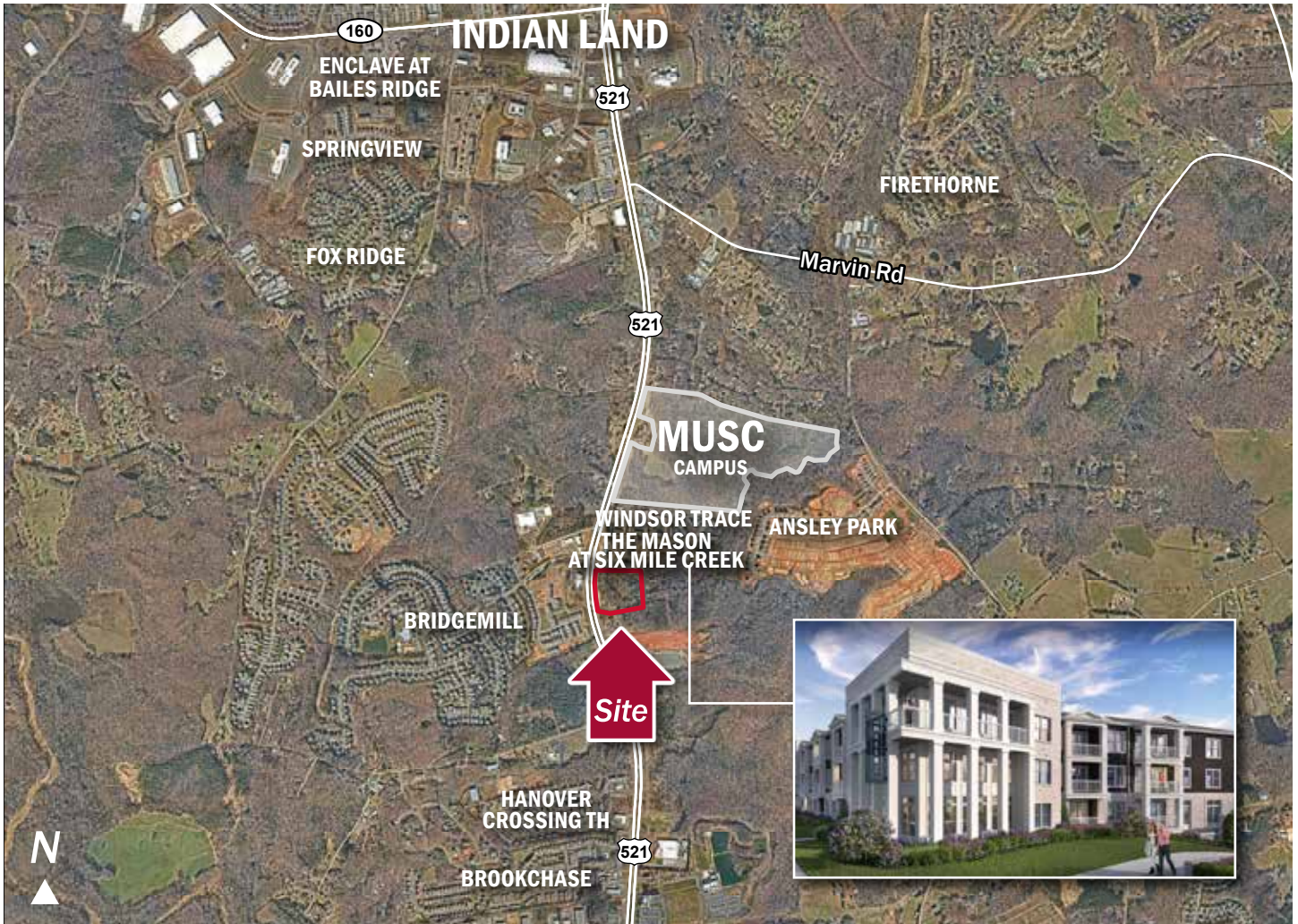


9.3 Acres for Sale



► Ansley Commercial Site

Highway 521, Indian Land, SC



Commercial Site for Sale

- Zoned for retail, medical, and office use.
- Adjacent to The Mason at Six Mile Creek (300 apartment units) and Somerset (110 Townhomes).
- Immediately south of MUSC's hospital campus.
- Water, sewer, electricity and natural gas available to site.
- Served by two full-service access roads from Hwy 521.
- Close proximity to Sun City, Bridgemill, Tree Tops, and numerous other residential neighborhoods.
- 32,000 total cars per day (SCDOT).

For Sale

► Contact

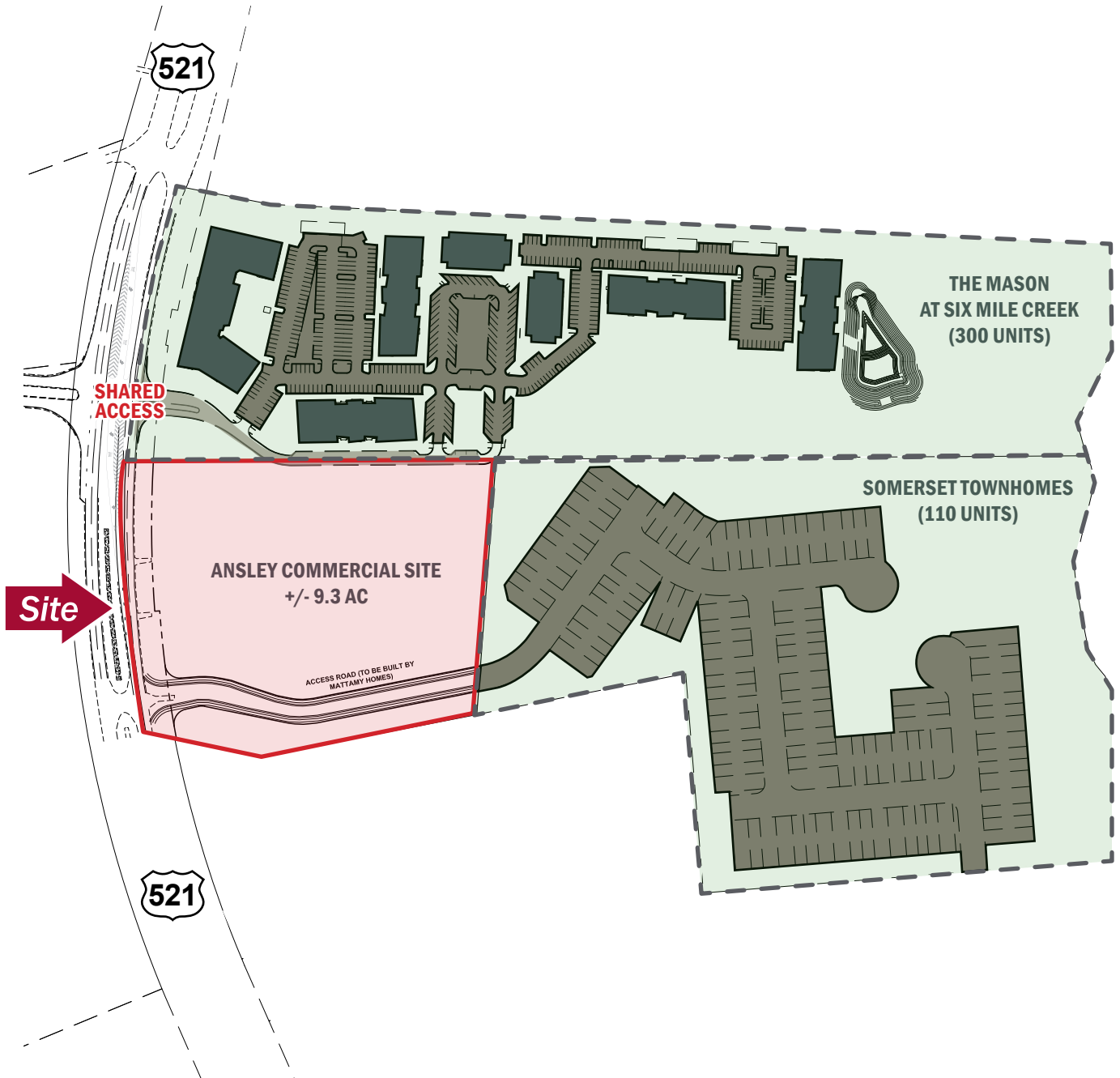
Mike Bilodeau
704.561.5253
mbilodeau@mpvre.com

Pricing

Call for Pricing

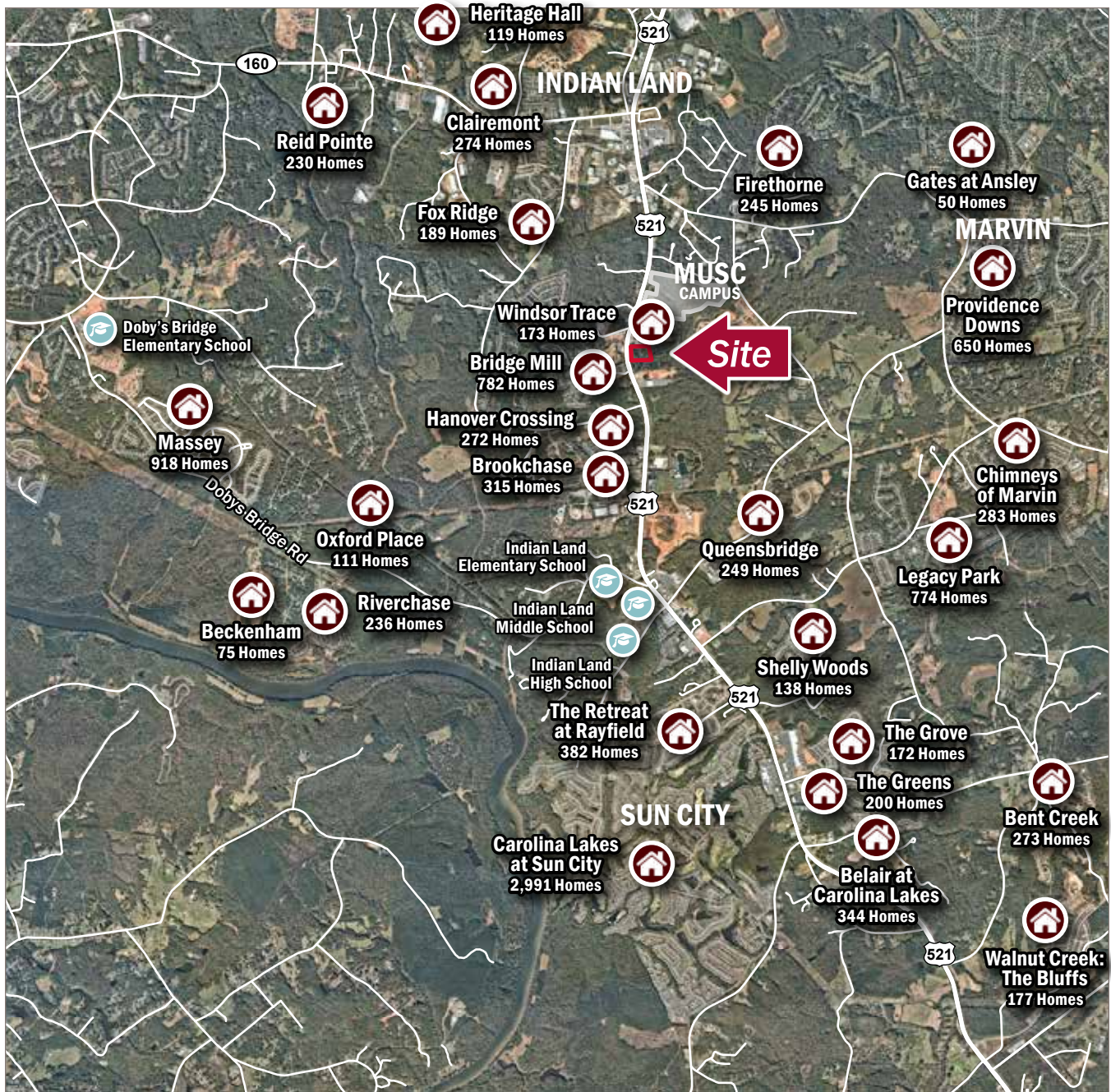
► Site Plan

Ansley Commercial Site
Highway 521, Indian Land, SC



► Nearby Residential

Ansley Commercial Site
Highway 521, Indian Land, SC



► Nearby Retail Amenities

Ansley Commercial Site
Highway 521, Indian Land, SC



For complete property listings, visit www.mpvre.com.



2400 South Boulevard, Suite 300 Charlotte, NC 28203 mpvre.com