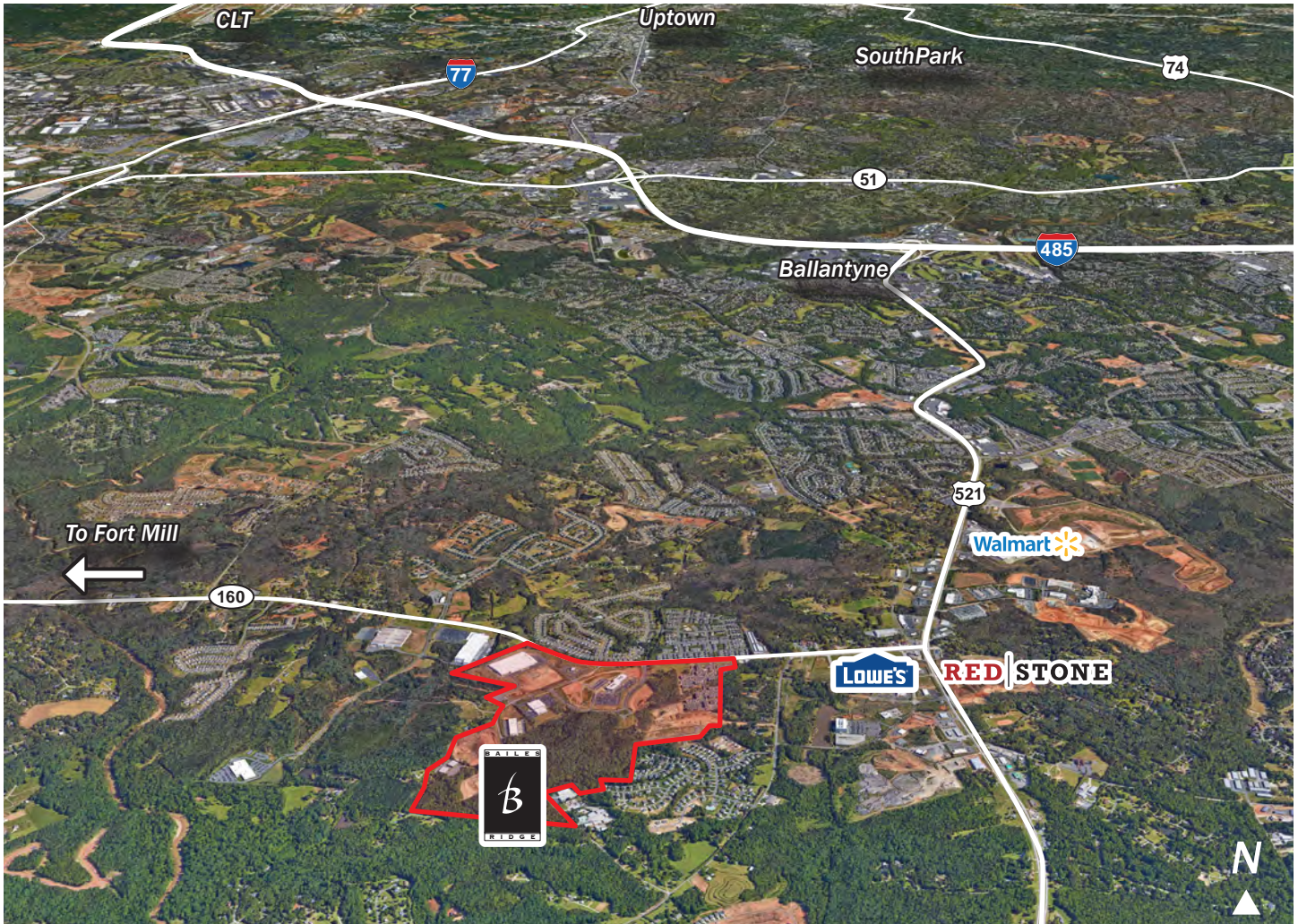


Land For Sale

► Bailes Ridge Corporate Park

Hwy 160 and Hwy 521, Lancaster County, SC 29707



Land

- 2 - 80 acres of land available in northern Lancaster County, SC
- Planned Development District: Zoned General Commercial (B-3)
- Located on Highway 160; 1/2 mile west of Highway 521
- Minutes from I-485 and Ballantyne area
- Great access to south Charlotte, Fort Mill and Rock Hill
- Quality office park with protective covenants and architectural controls
- Water, sewer, electricity, natural gas and telecom are available

For Sale

► Contact

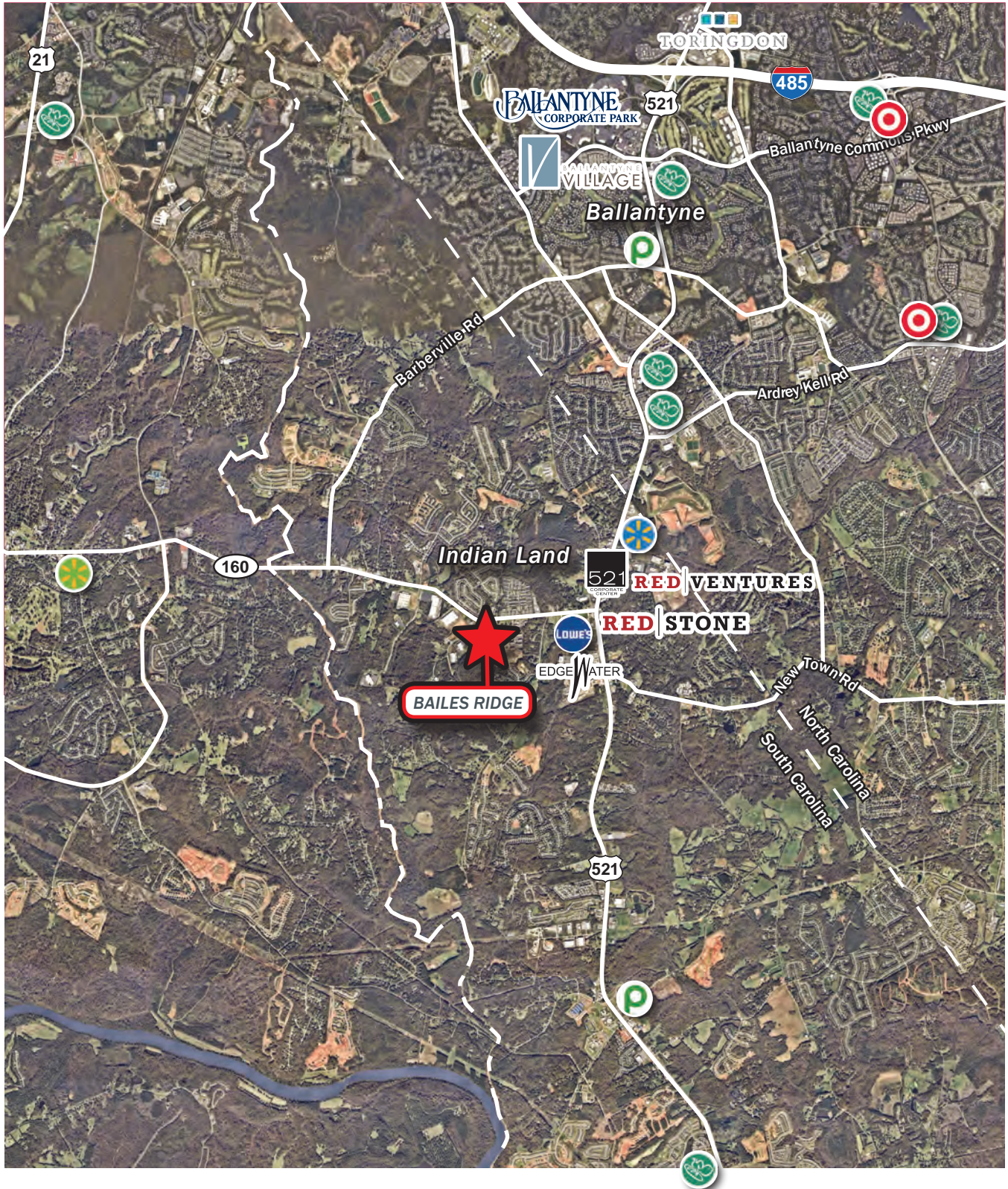
Micheal Bilodeau
704.561.5253
mbilodeau@mpvre.com

Pricing

Call For Pricing

► Locator Map

Bailes Ridge Corporate Park
Hwy 160 and Hwy 521, Lancaster County, SC 29707



► Master Plan

Bailes Ridge Corporate Park
Hwy 160 and Hwy 521, Lancaster County, SC 29707



► Park Photos

Bailes Ridge Corporate Park
Hwy 160 and Hwy 521, Lancaster County, SC 29707

