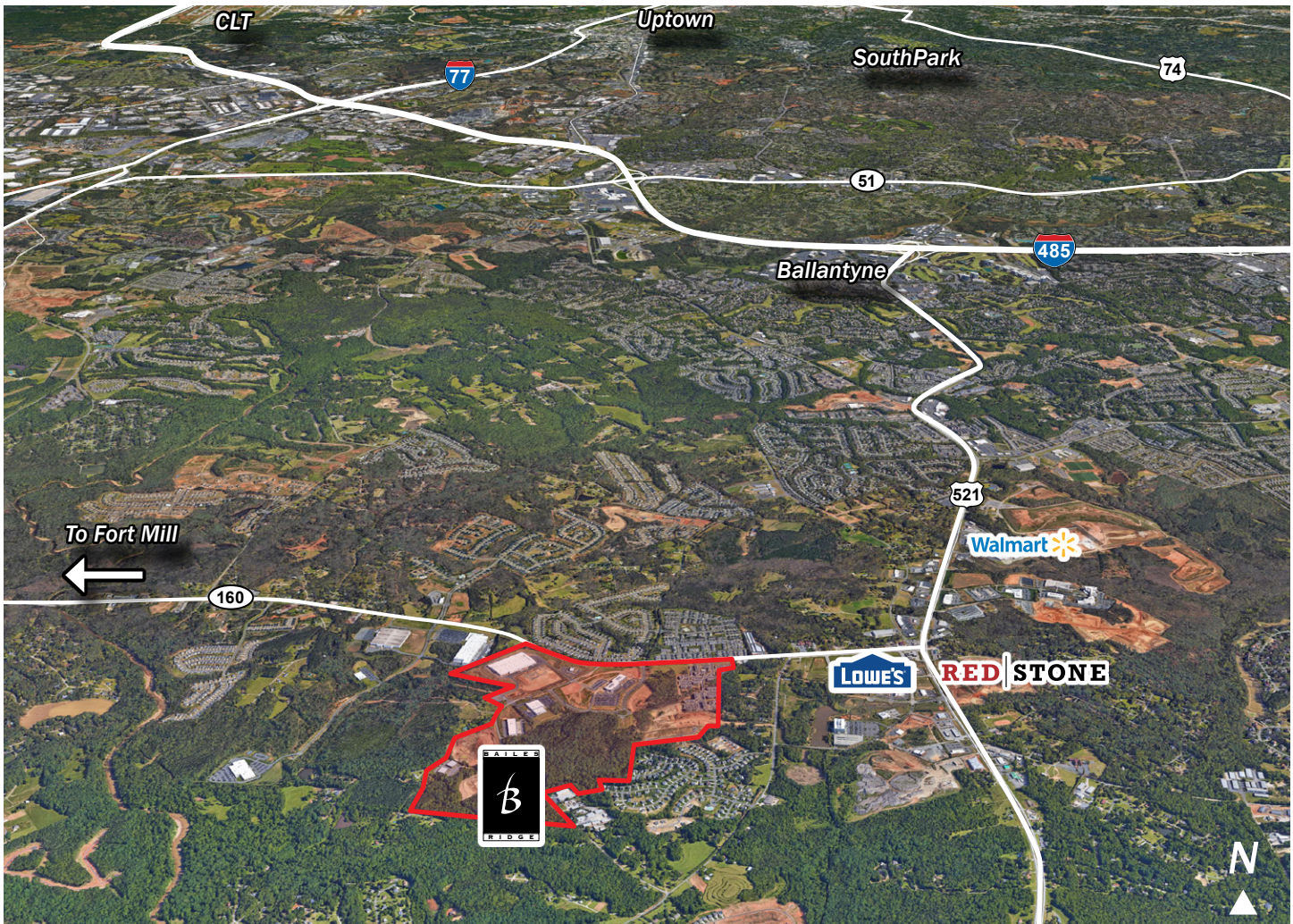


Land For Sale



Bailes Ridge Corporate Park

Hwy 160 and Hwy 521, Lancaster County, SC 29707



Land

- 27 acres of land available in northern Lancaster County, SC
- Planned Development District: Zoned General Commercial (B-3)
- Located on Highway 160; 1/2 mile west of Highway 521
- Minutes from I-485 and Ballantyne area
- Great access to south Charlotte, Fort Mill and Rock Hill
- Quality office park with protective covenants and architectural controls
- Water, sewer, electricity, natural gas and telecom are available

For Sale

Contact

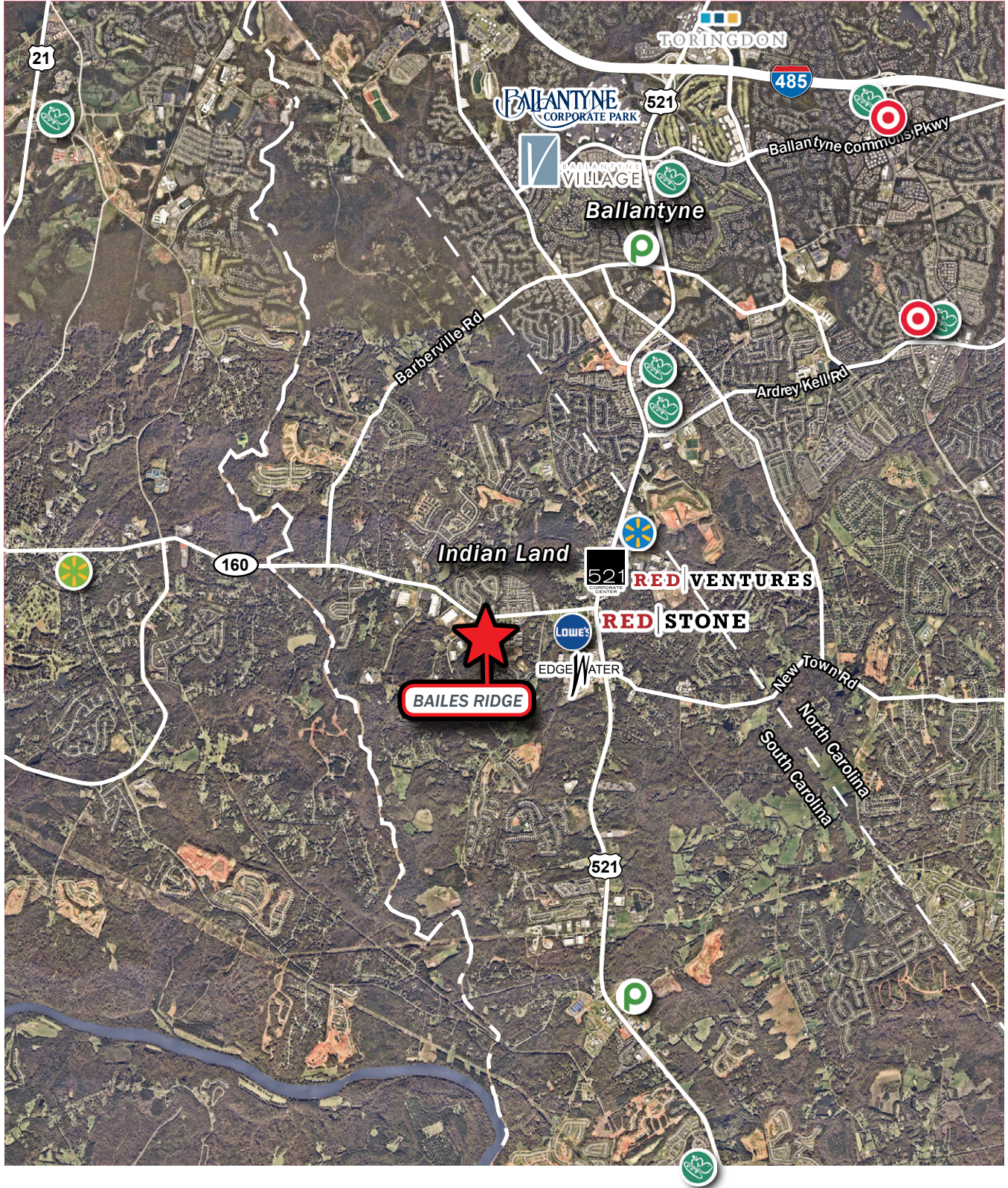
Micheal Bilodeau
704.561.5253
mbilodeau@mpvre.com

Pricing

Call For Pricing

Locator Map

Bailes Ridge Corporate Park
Hwy 160 and Hwy 521, Lancaster County, SC 29707



► Master Plan

Bailes Ridge Corporate Park
 Hwy 160 and Hwy 521, Lancaster County, SC 29707



LEGEND

1. Movement Mortgage
2. Keer of America
3. Honeywell Scanning and Mobility
4. Strategic Sales Partners
5. Grace Communications
6. Pencom
7. Howe Roofing
8. Click Fold
9. 110,000 SF Flex Space
10. CompuCom
11. Multi-Family
12. EMS
13. REMBE
14. Blythe Corporation
15. R&L Stone & Masonry

- Business Park
- Corporate Headquarters
- Lancaster County Nature Trail
- Residential
- Manufacturing

► Park Photos

Bailes Ridge Corporate Park
Hwy 160 and Hwy 521, Lancaster County, SC 29707



Honeywell Build-to-Suit



Park Sculpture



Movement Mortgage