

Office/Medical Office Building For Sale or Lease



▶ 2923 Rousseau Court

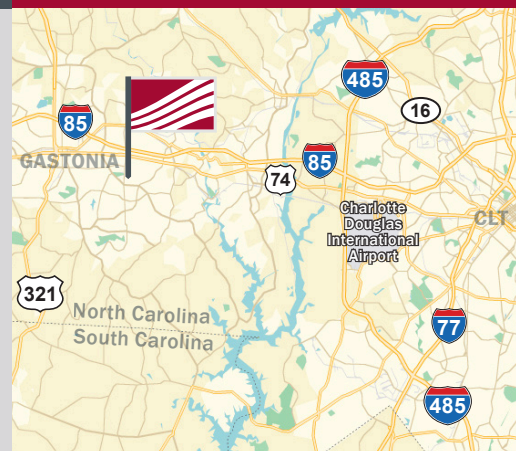
Gastonia, NC 28054



Office Building Available

- 8,900 SF office or medical office space available for sale or lease in Gastonia, NC
- 80 parking spaces with newly paved parking lot
- Conveniently located 1.3 miles from Interstate 85, off Cox Road
- Semi-private cul-da-sac
- Newly upfitted including new lights, new flooring, and LED lights throughout
- Break rooms and bathrooms on both 1st and 2nd floor
- Mixture of exam rooms, private offices, and open work spaces

For Sale or Lease



▶ Contact

Rebecca Herron
704.367.5017
rherron@mpvre.com

Pricing

Call for Pricing.

► Neighborhood Aerial

2923 Rousseau Court
Gastonia, NC 28054



This GIS data is deemed reliable but provided "as is" without warranty of any representation of accuracy, timeliness, reliability or completeness. This map document does not represent a legal survey of the land and is for graphical purposes only. Use of this data for any purpose should be of acknowledgment of the limitations of the data, including the fact that the data is dynamic and is in a constant state of maintenance, correction, and update.

▶ Market Aerial

2923 Rousseau Court
Gastonia, NC 28054



This GIS data is deemed reliable but provided "as is" without warranty of any representation of accuracy, timeliness, reliability or completeness. This map document does not represent a legal survey of the land and is for graphical purposes only. Use of this data for any purpose should be of acknowledgment of the limitations of the data, including the fact that the data is dynamic and is in a constant state of maintenance, correction, and update.

► Property Photos

2923 Rousseau Court
Gastonia, NC 28054



▶ Property Photos

2923 Rousseau Court
Gastonia, NC 28054



► Property Photos

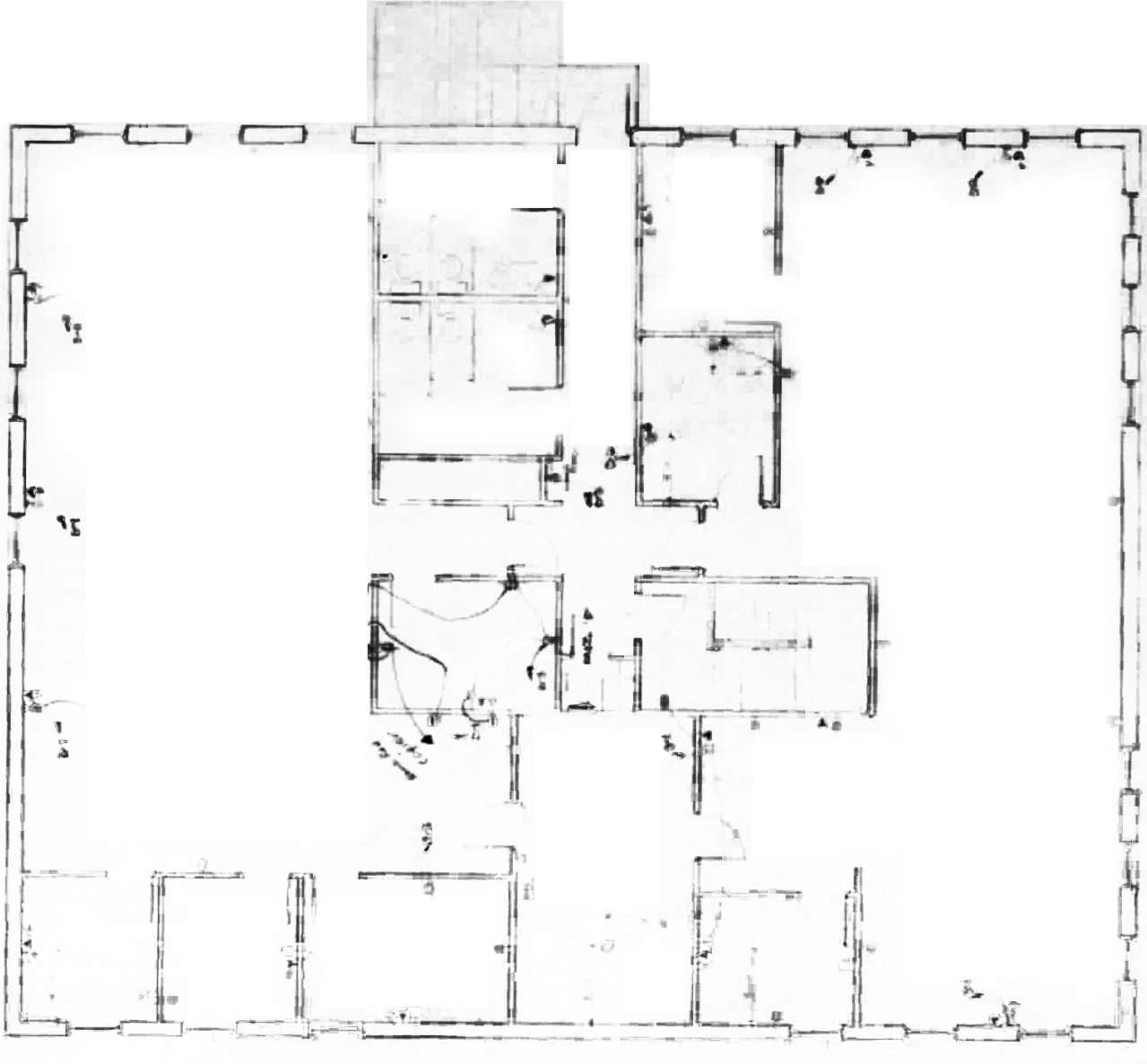
2923 Rousseau Court
Gastonia, NC 28054



► Floor Plan

2923 Rousseau Court
Gastonia, NC 28054

Second Floor



Second Floor

For complete property listings, visit www.mpvre.com.



2400 South Blvd., Suite 300 Charlotte, NC 28203 mpvre.com