

## 6 Acre Outparcel for Sale



# ► Hwy 29 Harrisburg Outparcel

Highway 29 at Morehead Rd, Harrisburg, NC



## Land for Sale

- 6 acre outparcel available as part of a future proposed mixed-use community
- Outparcel to be delivered rough graded with utilities stubbed
- Town of Harrisburg Zoning: Employment Center District (EC)
- Rezoning: Property currently under petition for General Commercial (CD)
- 1.8 miles (3min) to I-485 interchange

## For Sale

### ► Contact

Nolan Mills  
704.248.2133  
nmills@mpvre.com

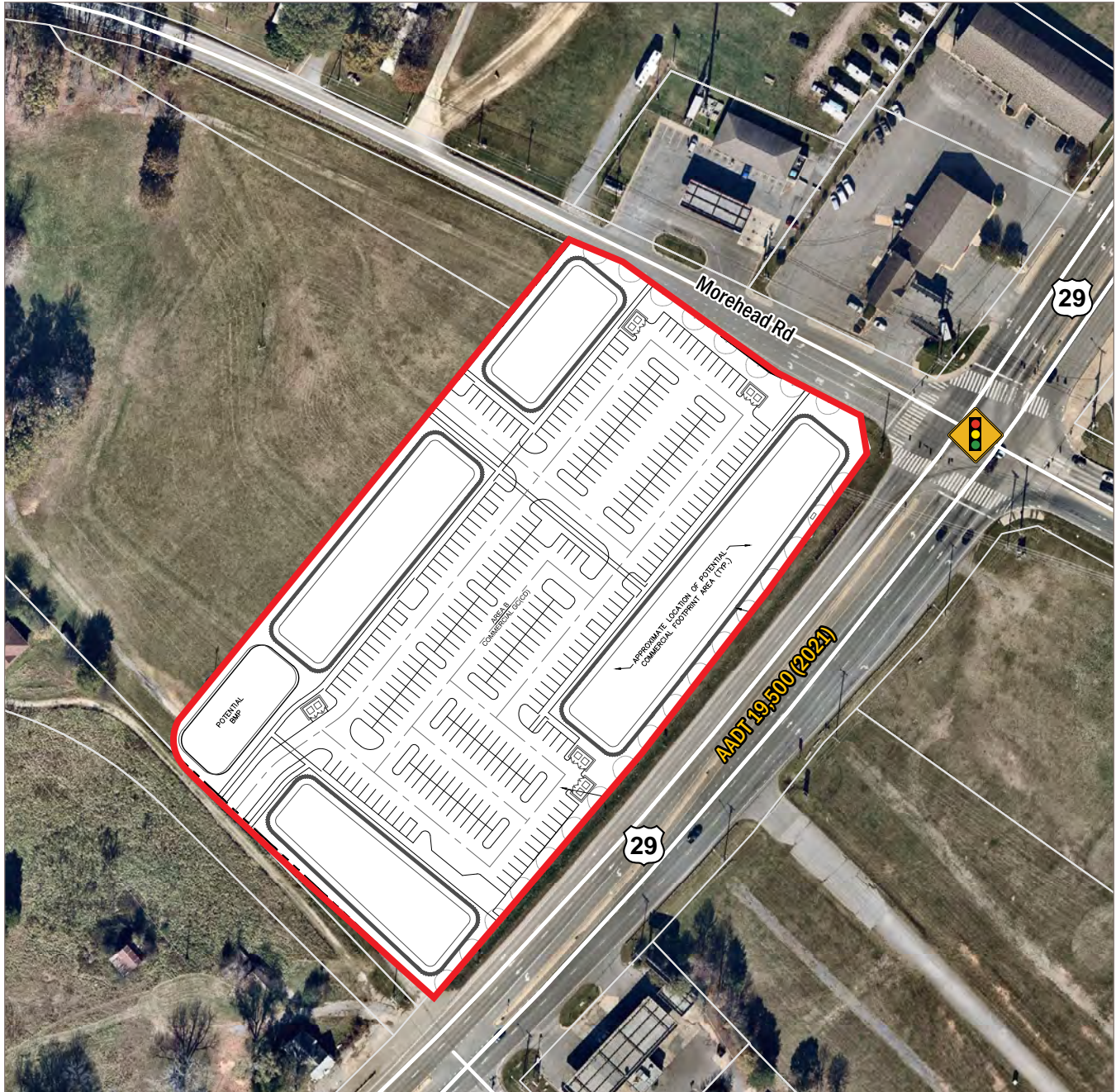
## Pricing

Call for Pricing



# ► Conceptual Site Plan

Hwy 29 Harrisburg Outparcel  
Highway 29 at Morehead Rd, Harrisburg, NC

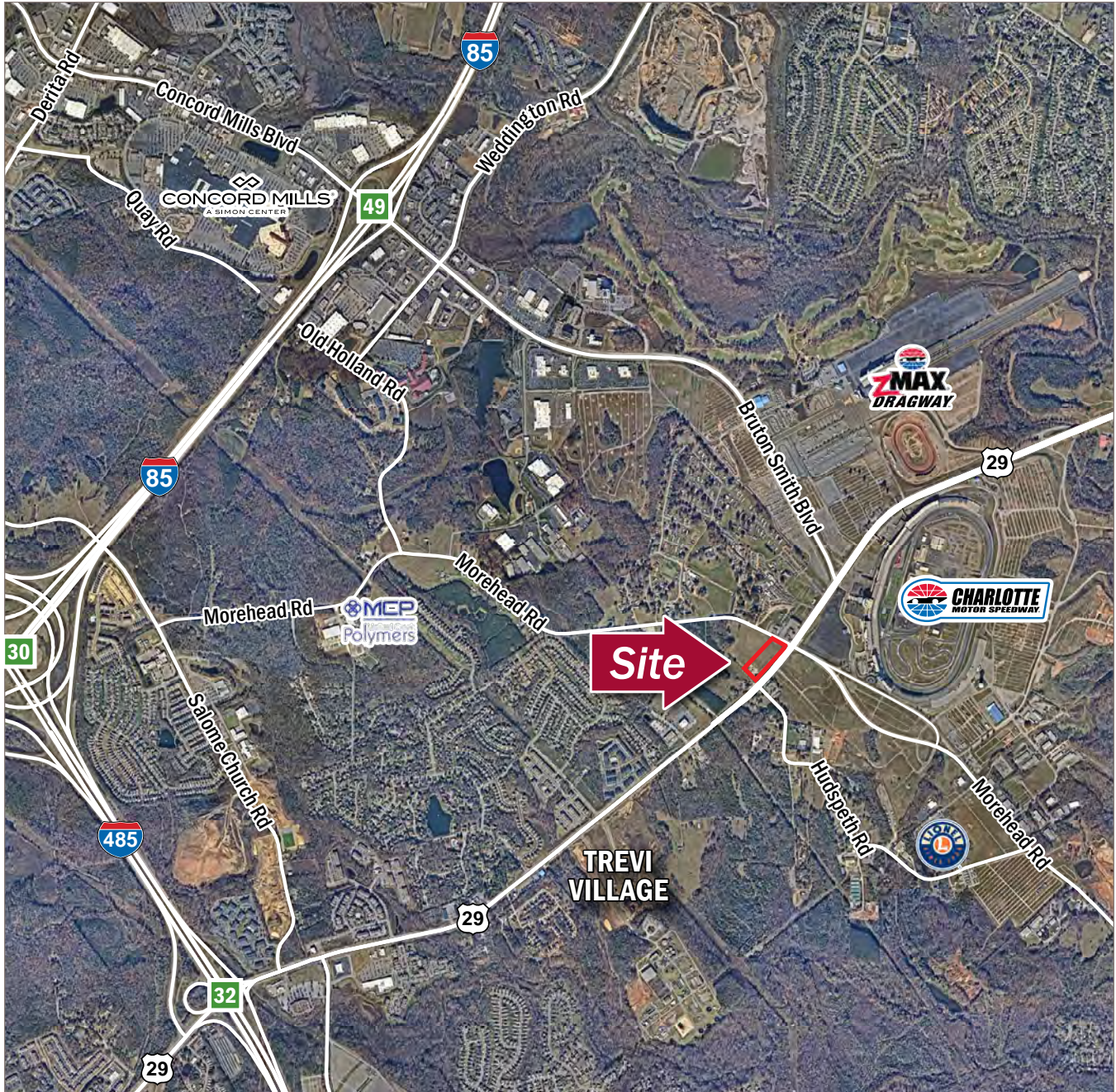


- Portion of PIDs 4598562430 & 4598564578
- Proposed uses include: 120-room hotel - 14,000 SF restaurant (no drive-thru) - 23,000 SF Office and Commercial (**SUBJECT TO CHANGE**)



## ► Interstate Proximity

Hwy 29 Harrisburg Outparcel  
Highway 29 at Morehead Rd, Harrisburg, NC



- 1.8mi to I-485 via Exit 32
- 2.1mi to I-85 via Bruton Smith Blvd

For complete property listings, visit [www.mpvre.com](http://www.mpvre.com).



2400 South Boulevard, Suite 300 Charlotte, NC 28203 [mpvre.com](http://mpvre.com)