

South Point Village Medical



SOUTH POINT ROAD, BELMONT, NC 28012

Medical

FOR | Lease
SIZE | 5,500 SF
PRICE | Call for Pricing



Overview

5,500 SF medical/office space for lease

Delivering Q3 2025

Located in South Point Village across from Harris Teeter anchored shopping center

2 miles south of Interstate 85 in Belmont's growing residential market, and situated between South Point High School and Belmont Middle School

Full access onto South Point Road

Medical Office Space For Lease; Delivering Q3 2025



Joey Morganthall
Director of Retail
(704) 367 5007
jmorganthall@mpvre.com

Kevin Judd
Brokerage Associate
(704) 367 5025
kjudd@mpvre.com

2400 South Boulevard | Suite 300
Charlotte, NC 28203

mpvre.com

South Point Village Medical

SOUTH POINT ROAD, BELMONT, NC 28012

Property Overview

Demographics

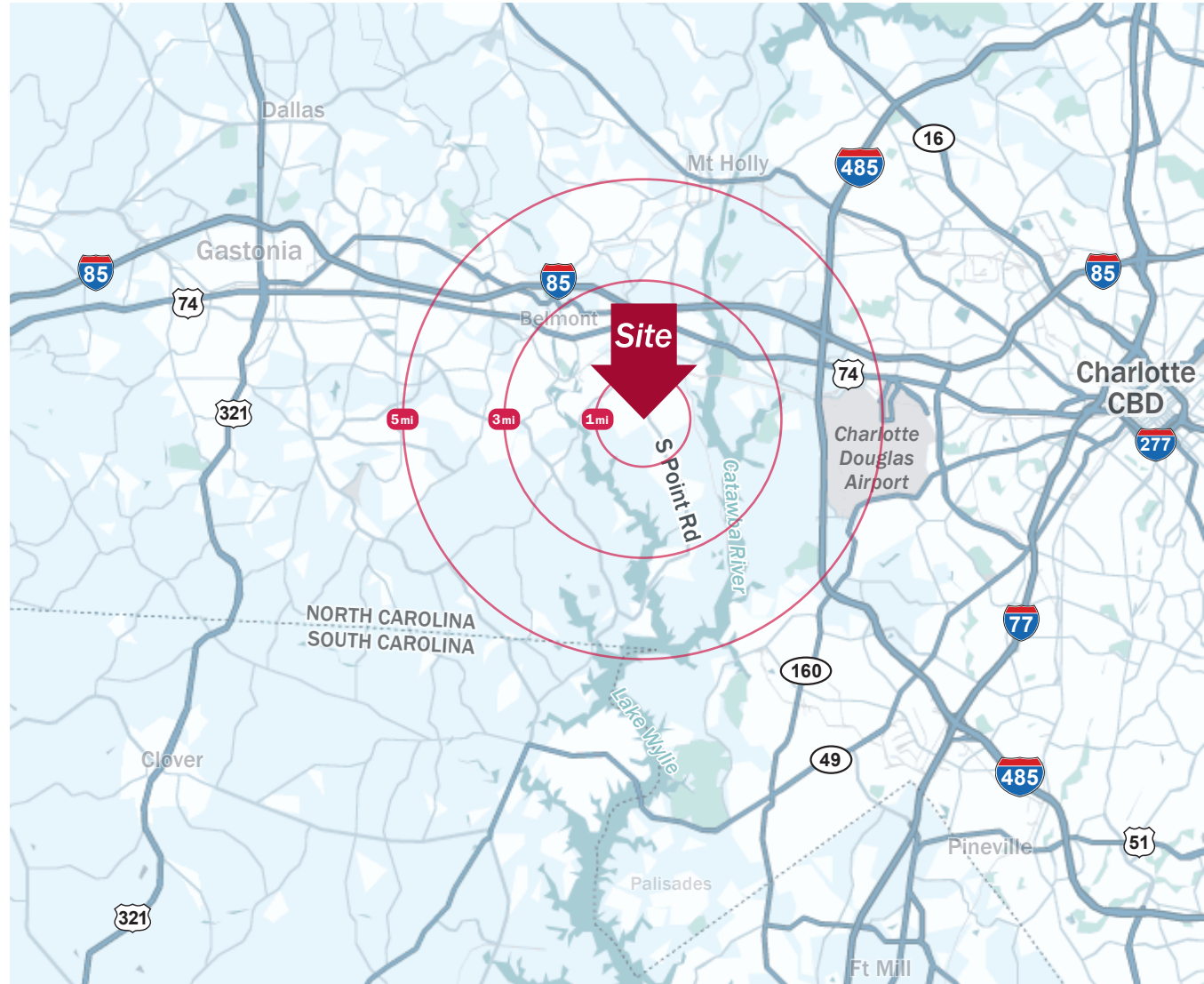
Source: Esri® 2024

	1 mile	3 mile	5 mile
Population	4,985	30,958	71,803
Households	1,943	12,727	28,914
Avg. HH Income	\$144,307	\$129,566	\$118,760

Traffic Count

Source: NCDOT

	AADT
South Point Road	17,195 (2024)
R L Stowe Road	10,751 (2024)



Joey Morganthall
Director of Retail

(704) 367 5007
jmorganthall@mpvre.com

Kevin Judd
Brokerage Associate

(704) 367 5025
kjudd@mpvre.com

2400 South Boulevard | Suite 300
Charlotte, NC 28203

mpvre.com

South Point Village Medical

SOUTH POINT ROAD, BELMONT, NC 28012

Site Plan



Joey Morganthall
Director of Retail

(704) 367 5007
jmorganthall@mpvre.com

Kevin Judd
Brokerage Associate

(704) 367 5025
kjudd@mpvre.com

2400 South Boulevard | Suite 300
Charlotte, NC 28203

mpvre.com

South Point Village Medical

SOUTH POINT ROAD, BELMONT, NC 28012

Site Renderings



Joey Morganthall
Director of Retail

(704) 367 5007
jmorganthall@mpvre.com

Kevin Judd
Brokerage Associate

(704) 367 5025
kjudd@mpvre.com

2400 South Boulevard | Suite 300
Charlotte, NC 28203

mpvre.com

South Point Village Medical

SOUTH POINT ROAD, BELMONT, NC 28012

Market Aerial

Residential Activity - 3 miles

Source: Zonda

Existing Units¹ 11,613

Homes Under Development 1,207

Future Homes 7,282

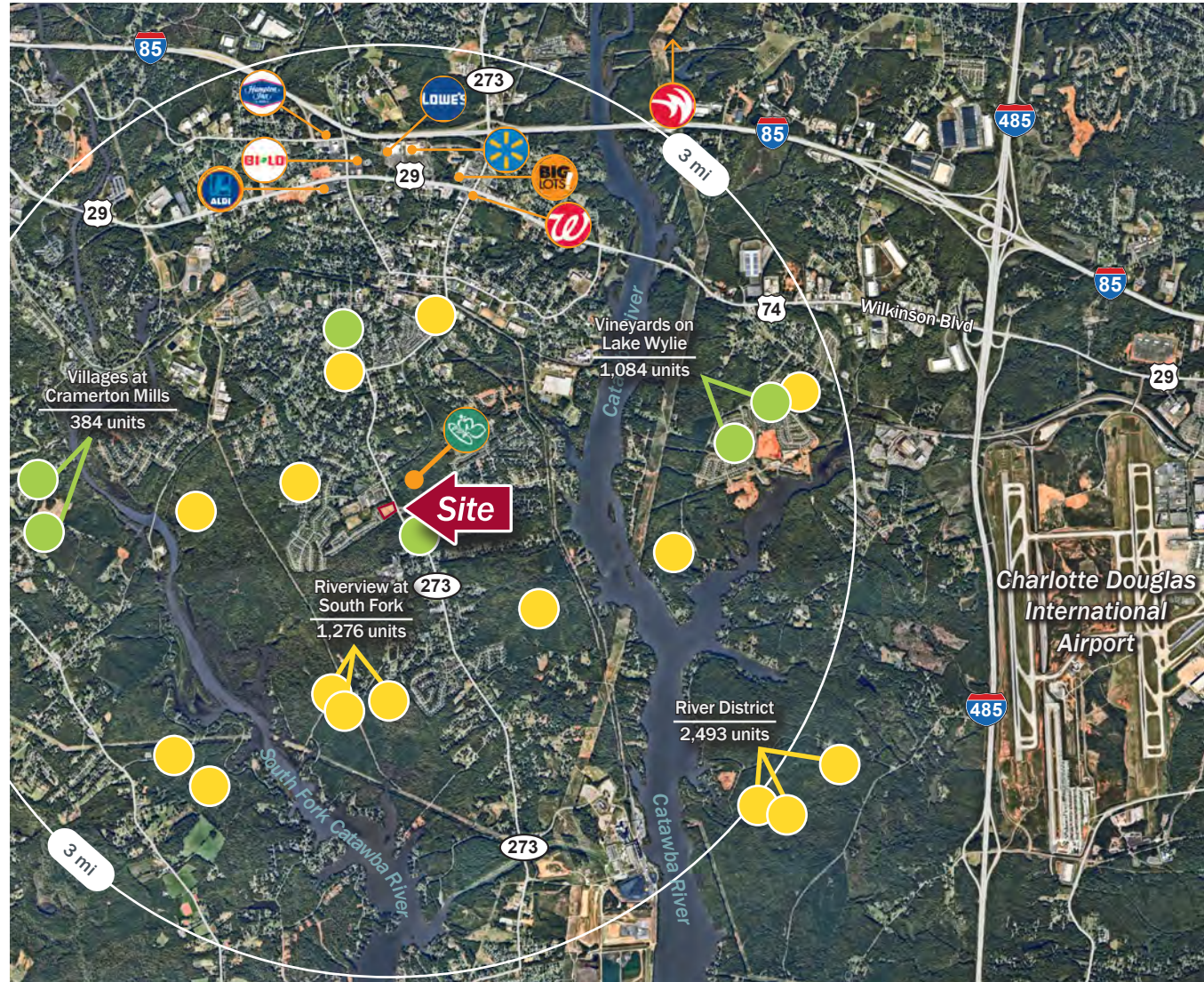
Total 20,102

¹Source: Esri© 2023

Subdivision Status

- Future
- Active

This GIS data is deemed reliable but provided "as is" without warranty of any representation of accuracy, timeliness, reliability or completeness. This map document does not represent a legal survey of the land and is for graphical purposes only. Use of this data for any purpose should be of acknowledgment of the limitations of the data, including the fact that the data is dynamic and is in a constant state of maintenance, correction, and update.



Joey Morganthall
Director of Retail

(704) 367 5007
jmorganthall@mpvre.com

Kevin Judd
Brokerage Associate

(704) 367 5025
kjudd@mpvre.com

2400 South Boulevard | Suite 300
Charlotte, NC 28203

mpvre.com

South Point Village Medical

SOUTH POINT ROAD, BELMONT, NC 28012

Property Photos



Shops Building along South Point Rd



Dentist Office Building



The Learning Experience



Shops Building from Parking Lot



Joey Morganthall
Director of Retail

(704) 367 5007
jmorganthall@mpvre.com

Kevin Judd
Brokerage Associate

(704) 367 5025
kjudd@mpvre.com

2400 South Boulevard | Suite 300
Charlotte, NC 28203

mpvre.com



Working Together

Medical | Industrial | Retail | Land | Investment | Office

contact

Joey Morganthall
Director of Retail

(704) 367 5007
jmorganthall@mpvre.com

Kevin Judd
Brokerage Associate

(704) 367 5025
kjudd@mpvre.com

2400 South Boulevard | Suite 300
Charlotte, NC 28203

mpvre.com