

4243 S Main St

SALISBURY, NC 28147



Industrial

FOR

Sale/Lease

SIZE

5,500 SF

PRICE

Sale: \$650,000 or Lease: \$12/SF NNN



Overview

5,500 SF office/warehouse building for sale/lease on Hwy 29 in Salisbury

3,800 SF warehouse and 1,700 SF office

1 drive-in door and 1 dock high door

16 foot clear height

Easy access to I-85 via Hwy 29 and Peeler Rd

5,500 SF Flex Industrial Building for Sale/Lease



Clark Alcorn
Broker

(704) 367 5005
calcorn@mpvre.com

2400 South Boulevard | Suite 300
Charlotte, NC 28203

mpvre.com

4243 S Main St

SALISBURY, NC 28147

Property Overview

Demographics

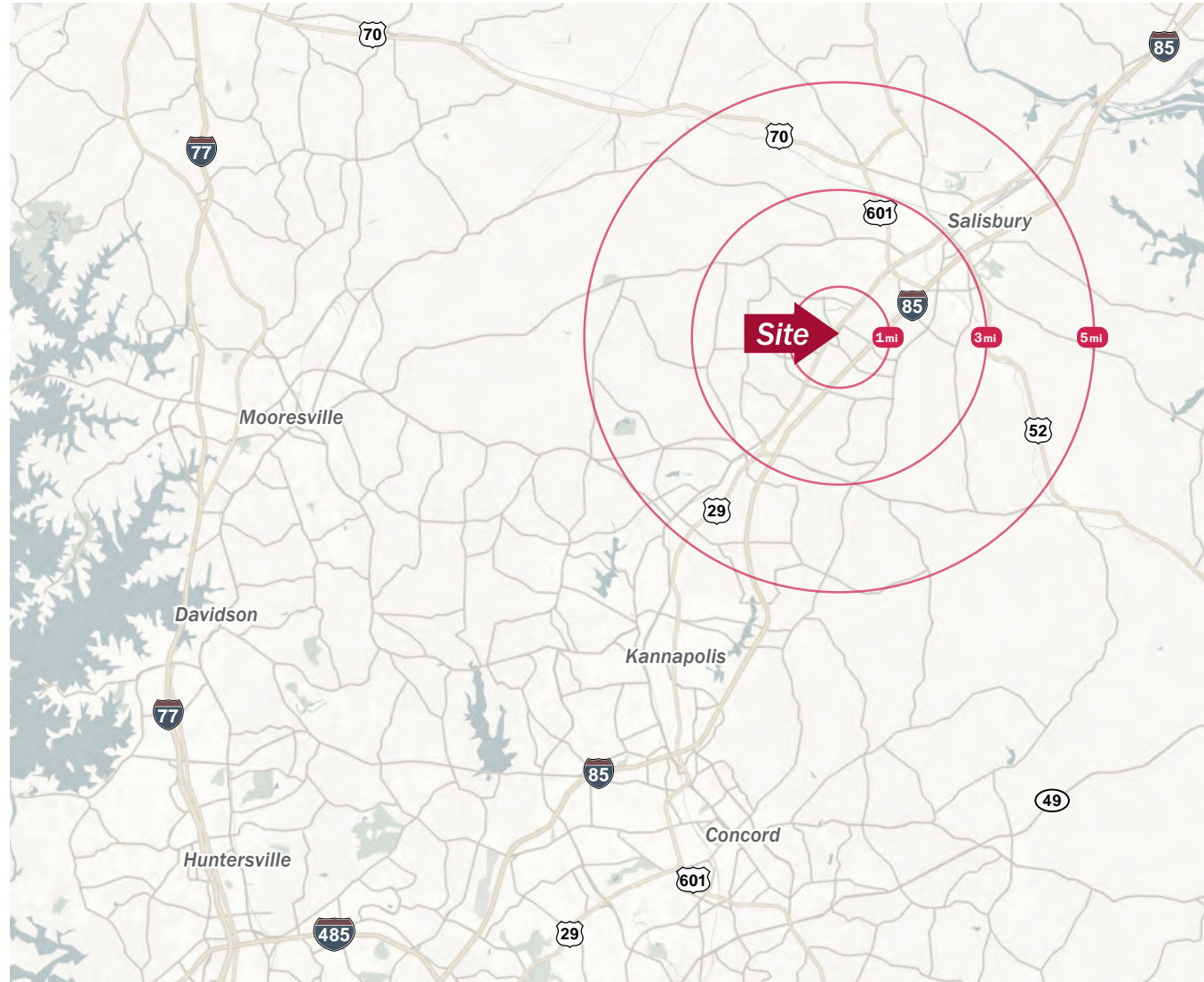
Source: Esri® 2023

	1 mile	3 mile	5 mile
Population	2,234	15,680	53,765
Housing Units	490	6,025	21,999
Avg. HH Income	\$72,612	\$78,877	\$71,461

Traffic Count

Source: NCDOT

	AADT
S Main St (Hwy 29)	11,000 (2021)



Clark Alcorn
Broker

(704) 367 5005
calcorn@mpvre.com

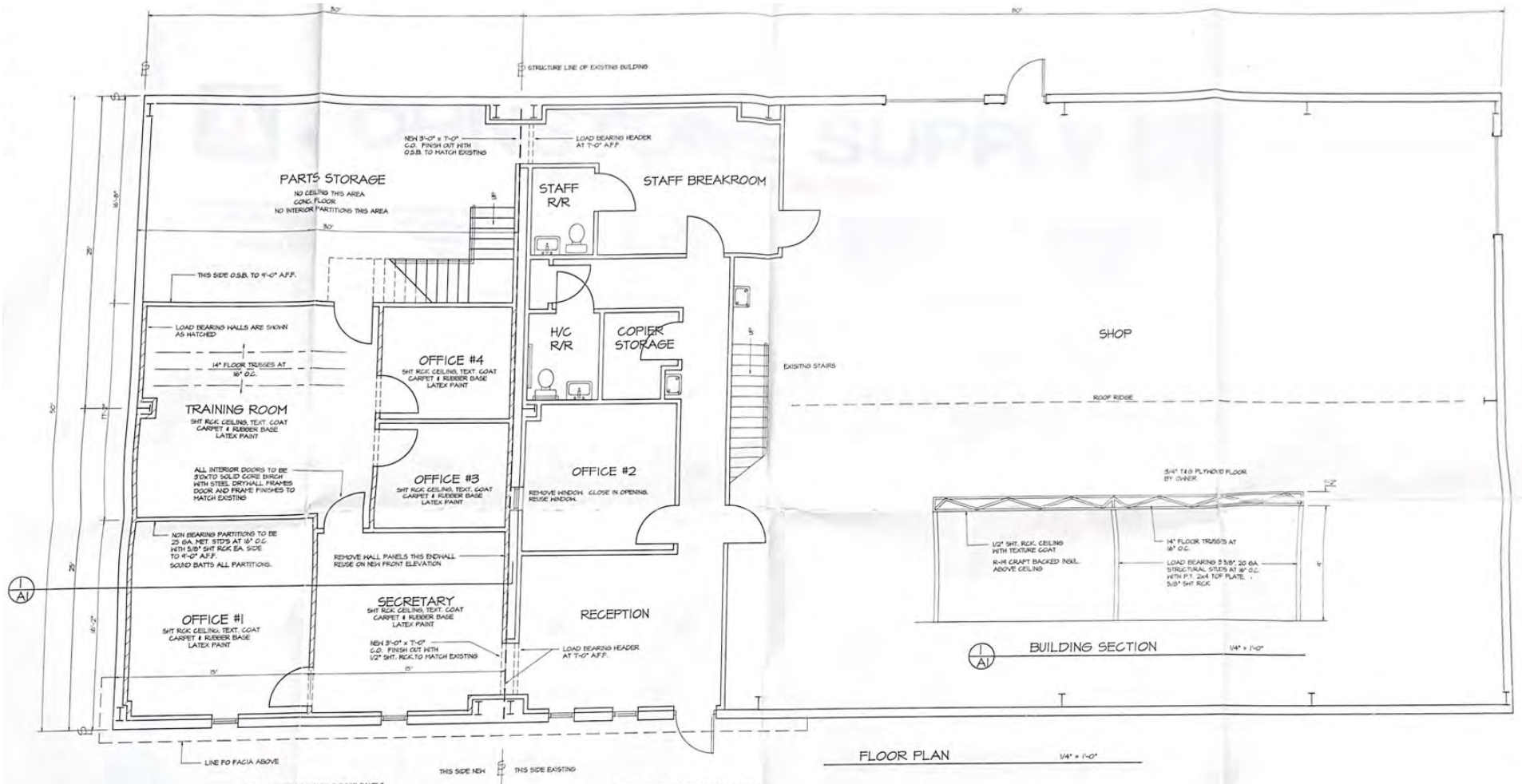
2400 South Boulevard | Suite 300
Charlotte, NC 28203

mpvre.com

4243 S Main St

SALISBURY, NC 28147

Floor Plan

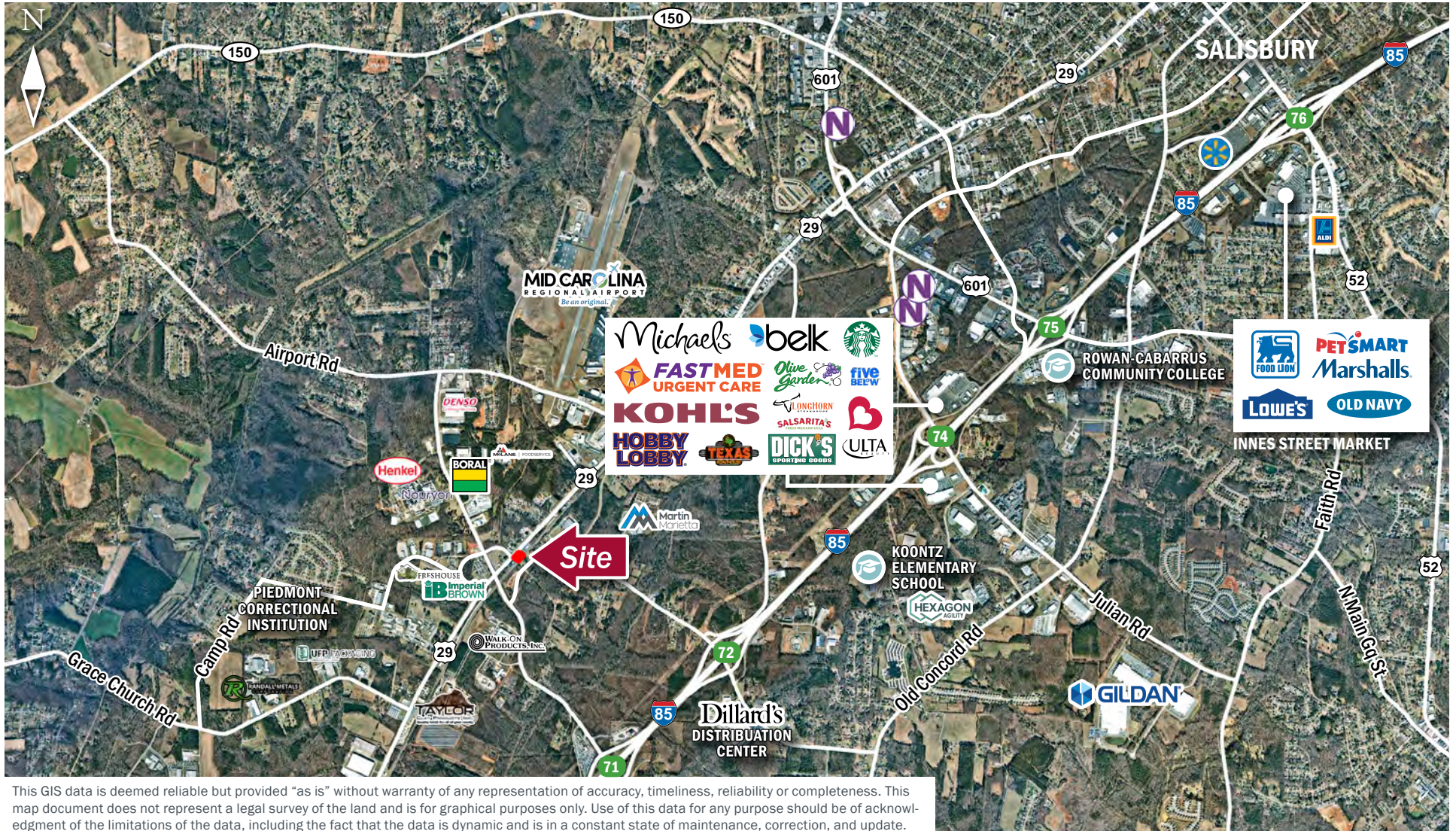


Clark Alcorn
Broker

(704) 367 5005
calcorn@mpvre.com

2400 South Boulevard | Suite 300
Charlotte, NC 28203

mpvre.com



This GIS data is deemed reliable but provided "as is" without warranty of any representation of accuracy, timeliness, reliability or completeness. This map document does not represent a legal survey of the land and is for graphical purposes only. Use of this data for any purpose should be of acknowledgment of the limitations of the data, including the fact that the data is dynamic and is in a constant state of maintenance, correction, and update.

4243 S Main St
SALISBURY, NC 28147

Property Photos



Clark Alcorn
Broker

(704) 367 5005
calcorn@mpvre.com

2400 South Boulevard | Suite 300
Charlotte, NC 28203

mpvre.com



Medical | Industrial | Retail | Land | Investment | Office

contact

Clark Alcorn
Broker

(704) 367 5005
calcorn@mpvre.com

2400 South Boulevard | Suite 300
Charlotte, NC 28203

mpvre.com