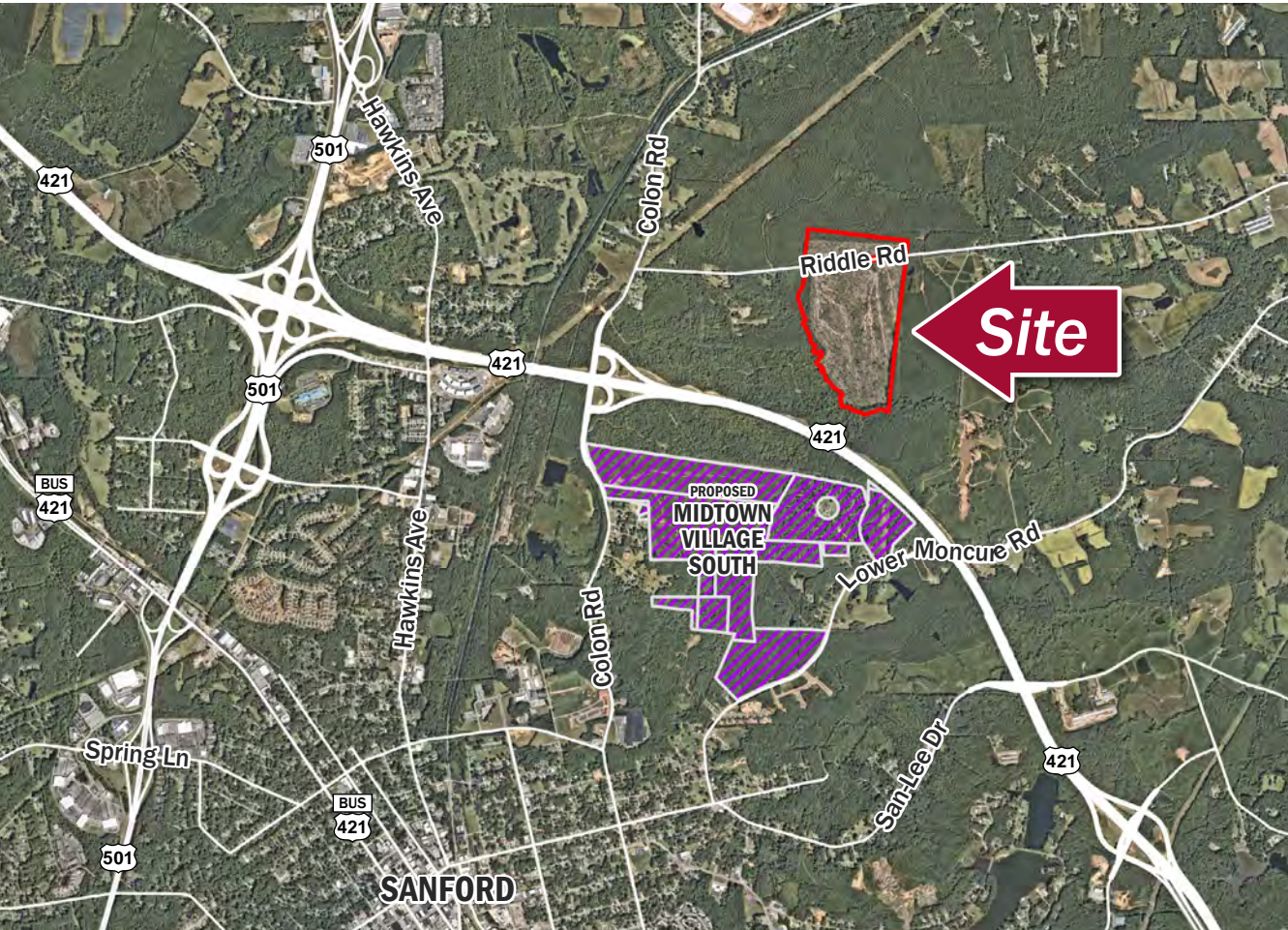


Riddle Road Land

SANFORD, NC



Land | **FOR** Sale | **SIZE** 122 Acres | **PRICE** Call for Pricing



Overview

Approximately 122 Acres fronting Riddle Road located near the Colony Road and Sanford Bypass (421) interchange

Lee County PID #9654-40-7539-000

Zoned: RA

Near to future planned 'Midtown Village'

±122 Acres of Land for Sale in Sanford, NC



Nolan Mills
Senior Vice President
(704) 248 2133
nmills@mpvre.com



Rhett Bost
Carolina Timberland Sales
(803) 230 7233

2400 South Boulevard | Suite 300
Charlotte, NC 28203

mpvre.com

Riddle Road Land

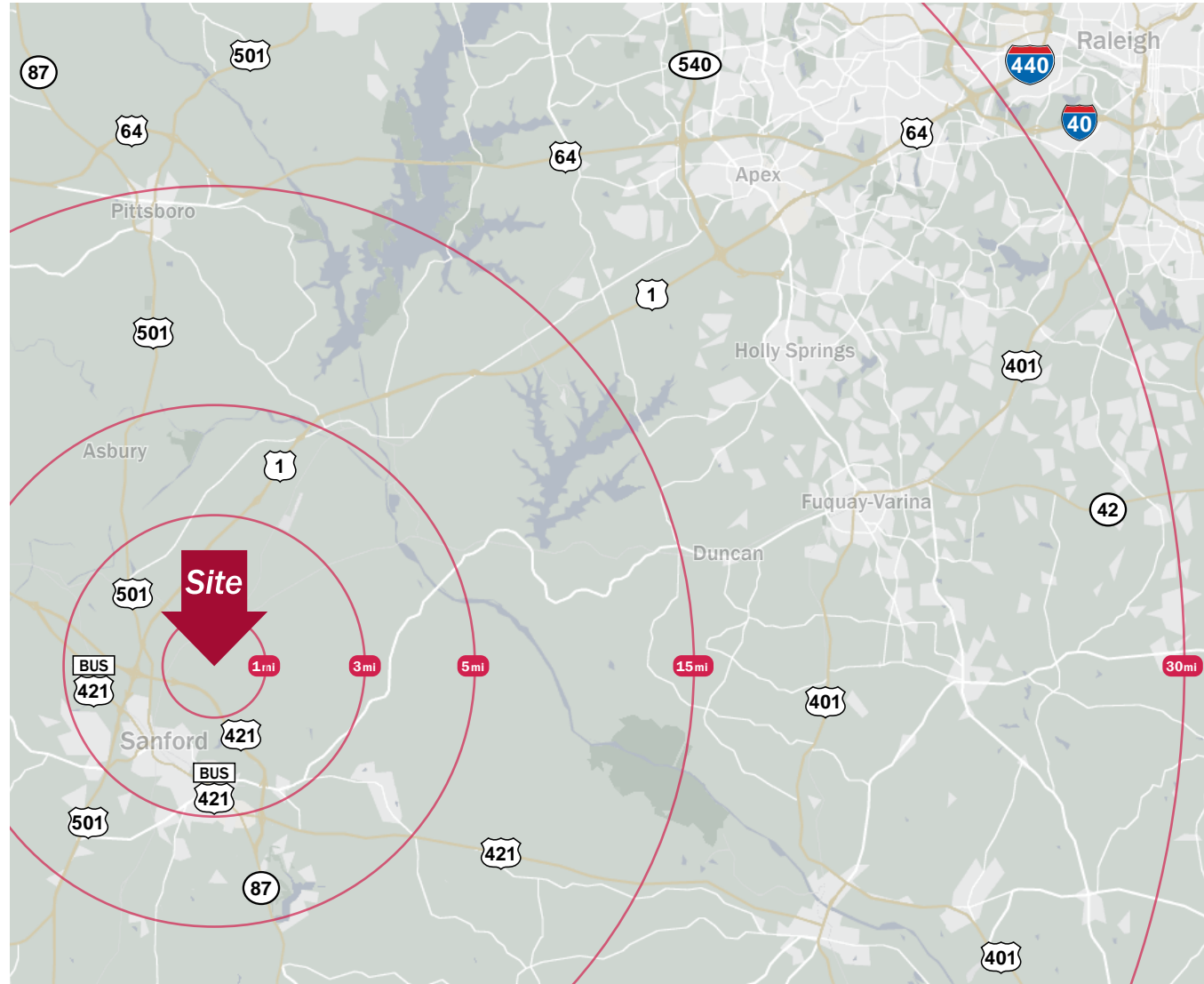
SANFORD, NC

Property Overview

Demographics

Source: Esri® 2023

	1 mile	3 mile	5 mile
Population	192	12,166	32,384m
Growth Rate	1.29%	1.54%	1.08%
Avg. HH Income	\$83,458	\$68,873	\$71,521



Nolan Mills
Senior Vice President
(704) 248 2133
nmills@mpvre.com



Rhett Bost
Carolina Timberland Sales
(803) 230 7233

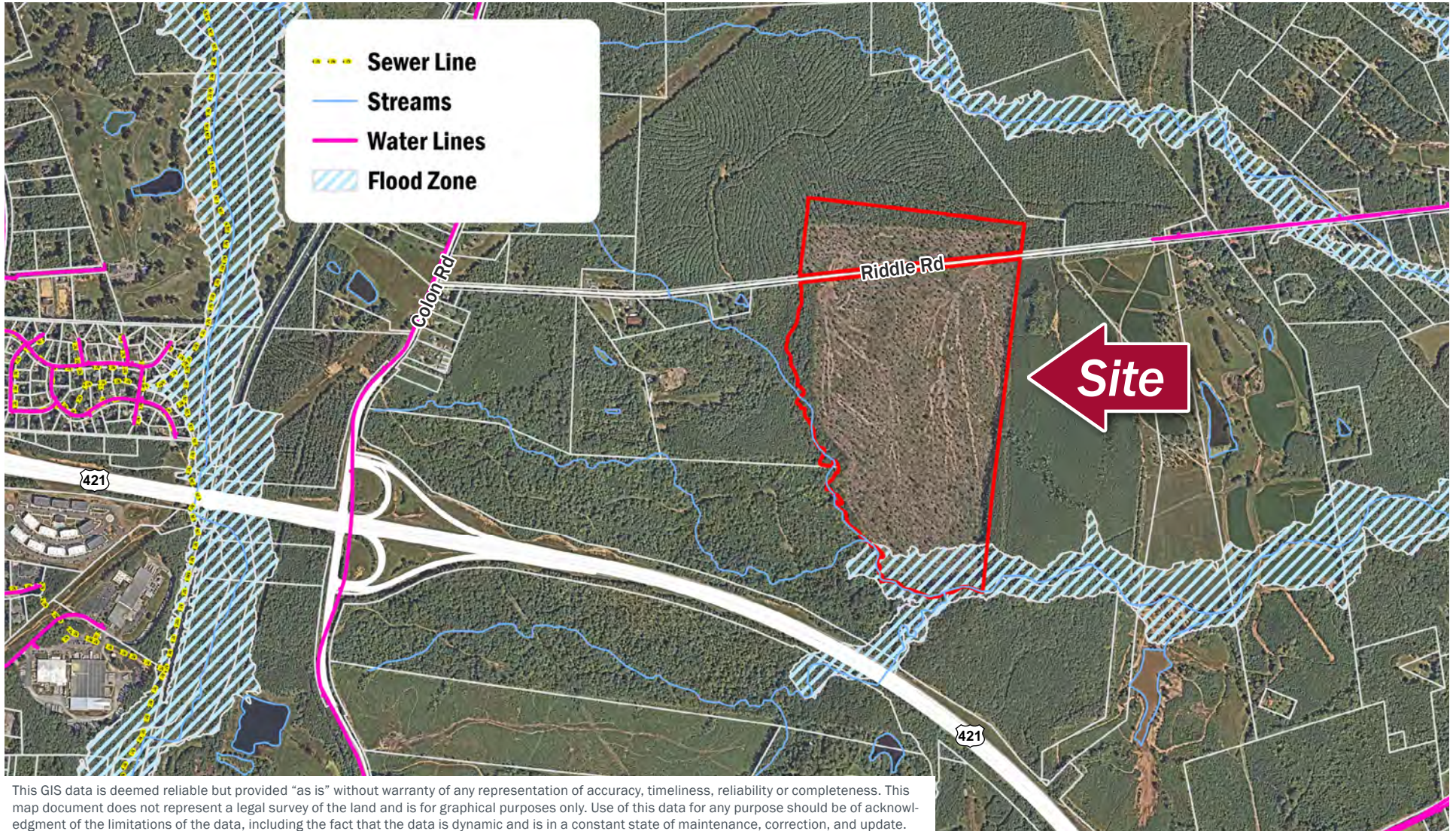
2400 South Boulevard | Suite 300
Charlotte, NC 28203

mpvre.com

Riddle Road Land

SANFORD, NC

Site Aerial



Nolan Mills
Senior Vice President
(704) 248 2133
nmills@mpvre.com



Rhett Bost
Carolina Timberland Sales
(803) 230 7233

2400 South Boulevard | Suite 300
Charlotte, NC 28203

mpvre.com



Medical | Industrial | Retail | Land | Investment | Office

contact

Nolan Mills
Senior Vice President
(704) 248 2133
nmills@mpvre.com



Rhett Bost
Carolina Timberland Sales
(803) 230 7233

2400 South Boulevard | Suite 300
Charlotte, NC 28203

mpvre.com