

Berewick Town Center

BEREWICK TOWN CENTER DR, CHARLOTTE, NC 28278



Retail/Medical

FOR

| Lease

SIZE

| 1,400 SF - 7,500 SF

PRICE

| Call for Pricing



Overview

1,400 SF - 7,500 SF available for lease. Seeking medical and retail tenants.

Delivering in 2025

78 parking spaces available (5.2/1,000).
Multiple access points.

Located within Berewick Town Center, a master planned development anchored by Harris Teeter.

Patio space planned for customers and employees. Walking distance to numerous restaurants and other amenities.

1,400 - 7,500 SF Retail/ Medical Office Space for Lease



Robbie Adams
Director of Retail

(704) 248 2108
radams@mpvre.com

Davis Kirby
Broker

(704) 367 5018
dkirby@mpvre.com

2400 South Boulevard | Suite 300
Charlotte, NC 28203

mpvre.com

Berewick Town Center

BEREWICK TOWN CENTER DR, CHARLOTTE, NC 28278

Property Overview

Demographics

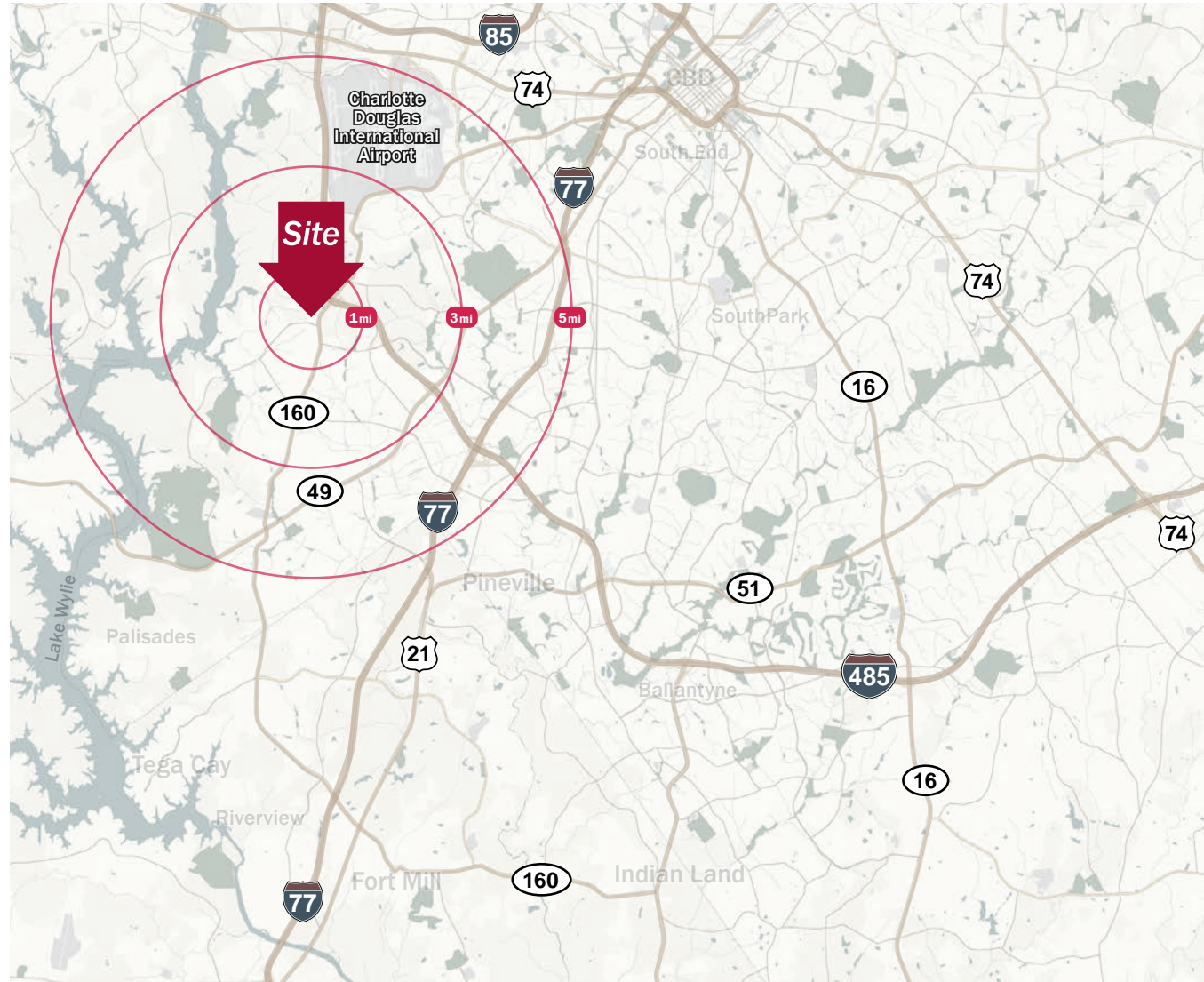
Source: Esri® 2023

	1 mile	3 mile	5 mile
Population	8,838	43,022	104,008
Growth Rate	1.04%	2.29%	2.35%
Avg. HH Income	\$138,065	\$108,259	\$104,687

Traffic Count

Source: NCDOT

	AADT
Hwy 160	42,000 (2022)



Robbie Adams
Director of Retail

(704) 248 2108
radams@mpvre.com

Davis Kirby
Broker

(704) 367 5018
dkirby@mpvre.com

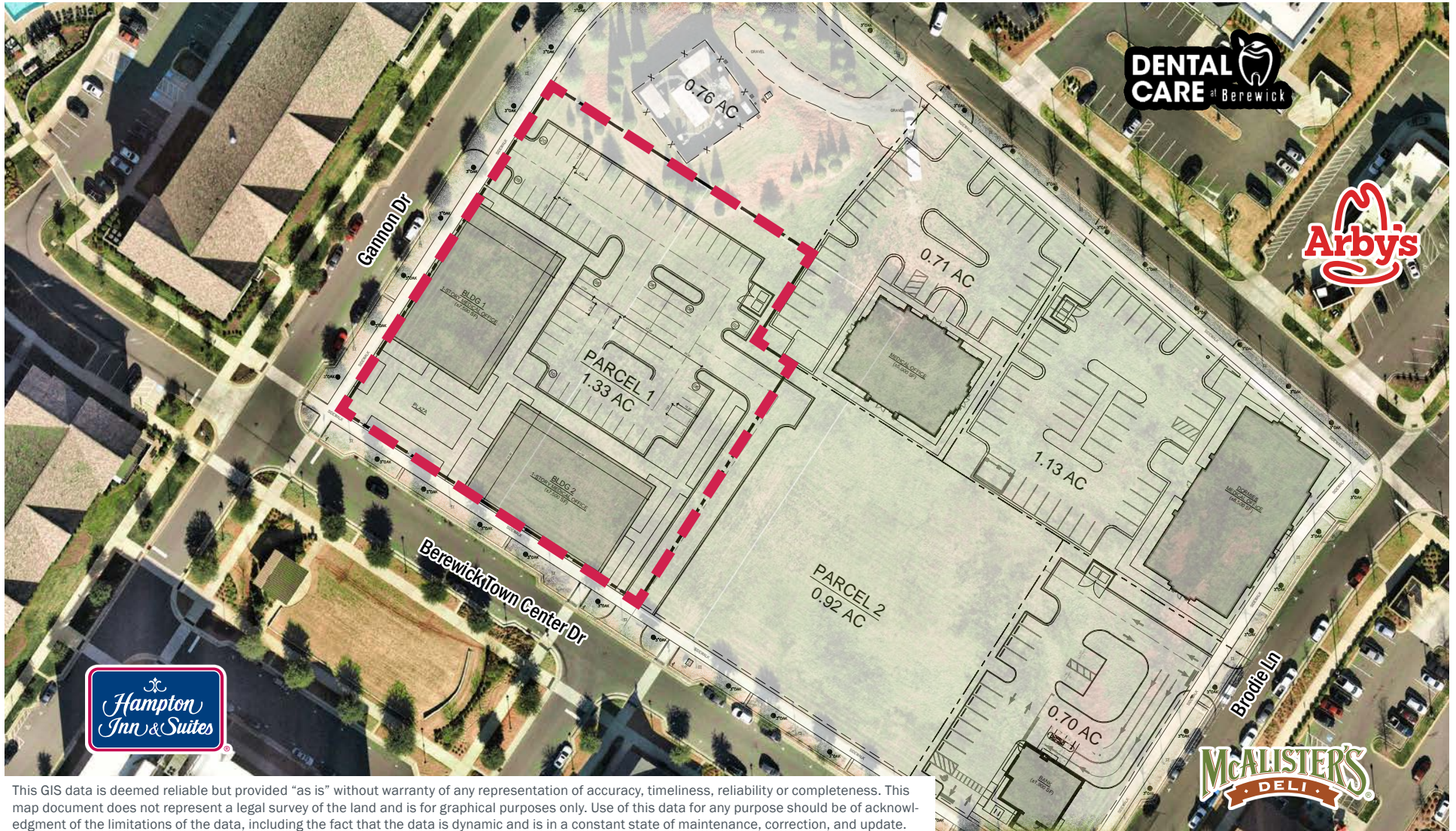
2400 South Boulevard | Suite 300
Charlotte, NC 28203

mpvre.com

Berewick Town Center

BEREWICK TOWN CENTER DR, CHARLOTTE, NC 28278

Site Plan



This GIS data is deemed reliable but provided "as is" without warranty of any representation of accuracy, timeliness, reliability or completeness. This map document does not represent a legal survey of the land and is for graphical purposes only. Use of this data for any purpose should be of acknowledgment of the limitations of the data, including the fact that the data is dynamic and is in a constant state of maintenance, correction, and update.



Robbie Adams
Director of Retail
(704) 248 2108
radams@mpvre.com

Davis Kirby
Broker
(704) 367 5018
dkirby@mpvre.com

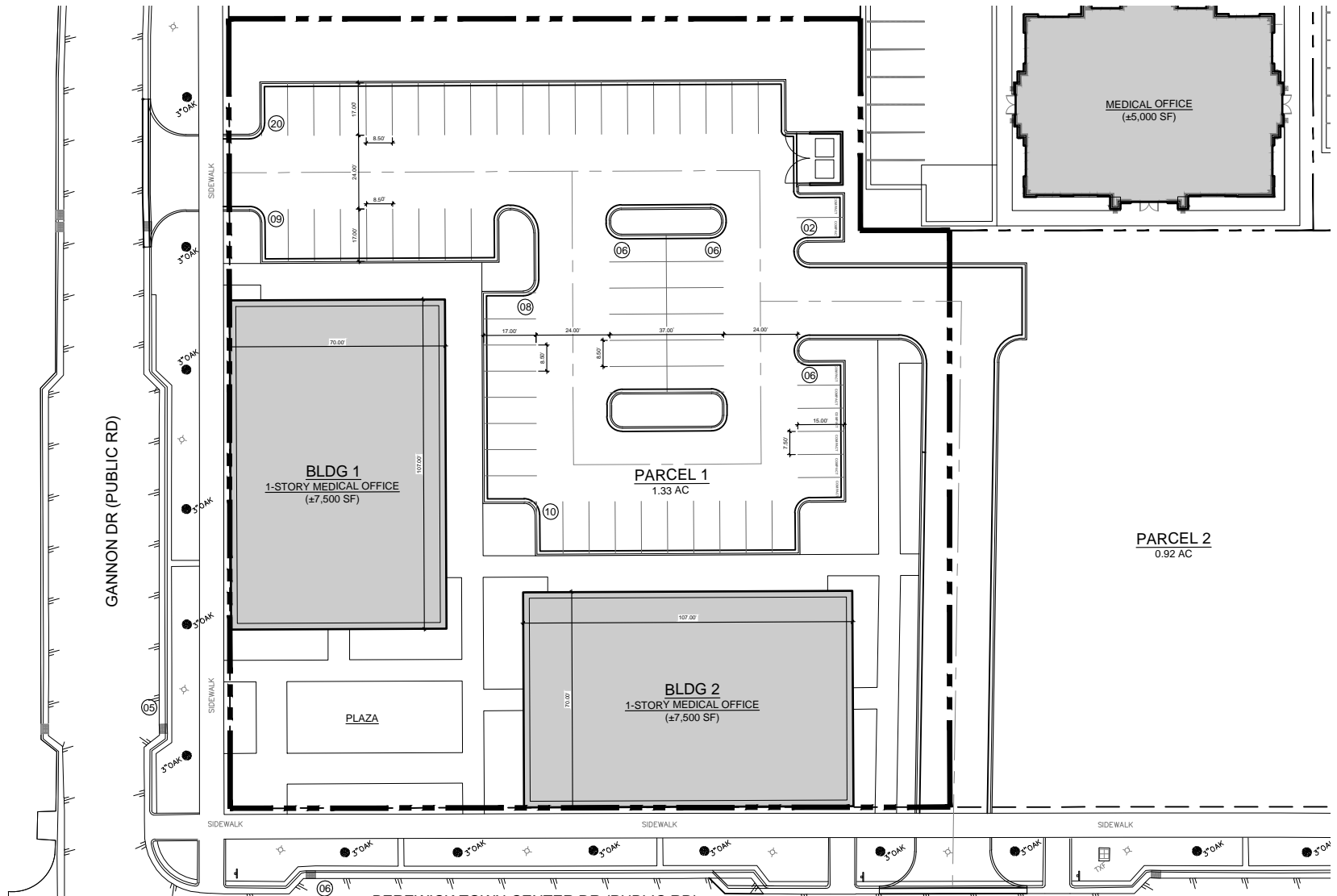
2400 South Boulevard | Suite 300
Charlotte, NC 28203

mpvre.com

Berewick Town Center

BEREWICK TOWN CENTER DR, CHARLOTTE, NC 28278

Parcel 1: Site Plan



Robbie Adams
Director of Retail
(704) 248 2108
radams@mpvre.com

Davis Kirby
Broker
(704) 367 5018
dkirby@mpvre.com

2400 South Boulevard | Suite 300
Charlotte, NC 28203

mpvre.com

Berewick Town Center

BEREWICK TOWN CENTER DR, CHARLOTTE, NC 28278

Rendering



Robbie Adams
Director of Retail

(704) 248 2108
radams@mpvre.com

Davis Kirby
Broker

(704) 367 5018
dkirby@mpvre.com

2400 South Boulevard | Suite 300
Charlotte, NC 28203

mpvre.com

Berewick Town Center

BEREWICK TOWN CENTER DR, CHARLOTTE, NC 28278

Market Aerial



This GIS data is deemed reliable but provided "as is" without warranty of any representation of accuracy, timeliness, reliability or completeness. This map document does not represent a legal survey of the land and is for graphical purposes only. Use of this data for any purpose should be of acknowledgment of the limitations of the data, including the fact that the data is dynamic and is in a constant state of maintenance, correction, and update.



Robbie Adams
 Director of Retail
 (704) 248 2108
 radams@mpvre.com

Davis Kirby
 Broker
 (704) 367 5018
 dkirby@mpvre.com

2400 South Boulevard | Suite 300
 Charlotte, NC 28203

mpvre.com

Berewick Town Center

BEREWICK TOWN CENTER DR, CHARLOTTE, NC 28278

Site Aerial



This GIS data is deemed reliable but provided "as is" without warranty of any representation of accuracy, timeliness, reliability or completeness. This map document does not represent a legal survey of the land and is for graphical purposes only. Use of this data for any purpose should be of acknowledgment of the limitations of the data, including the fact that the data is dynamic and is in a constant state of maintenance, correction, and update.



Robbie Adams
Director of Retail

(704) 248 2108
radams@mpvre.com

Davis Kirby
Broker

(704) 367 5018
dkirby@mpvre.com

2400 South Boulevard | Suite 300
Charlotte, NC 28203

mpvre.com

Berewick Town Center

BEREWICK TOWN CENTER DR, CHARLOTTE, NC 28278

Property Photos



Robbie Adams
Director of Retail
(704) 248 2108
radams@mpvre.com

Davis Kirby
Broker
(704) 367 5018
dkirby@mpvre.com

2400 South Boulevard | Suite 300
Charlotte, NC 28203

mpvre.com



Working Together

Medical | Industrial | Retail | Land | Investment | Office

contact

Robbie Adams
Director of Retail

(704) 248 2108
radams@mpvre.com

Davis Kirby
Broker

(704) 367 5018
dkirby@mpvre.com

2400 South Boulevard | Suite 300
Charlotte, NC 28203

mpvre.com