

# Reafield Retail

9923 REA ROAD, WAXHAW, NC 28173

Retail

FOR

Lease

SIZE

4,000 SF

PRICE

Call for pricing



## Overview

4,000 SF of stand-alone retail space available in South Charlotte

Located at the corner of Rea Road and Tom Short Road, just one mile south of Blakeney Shopping Center

The area around Reafield is experiencing some of the fastest population growth and highest incomes in the Charlotte Market

Reafield is in close proximity to some of Charlotte's most upscale neighborhoods in South Charlotte, Marvin, and Waxhaw

Join Novant Health, Rosati's Pizza, barre3, Brush'd Salon, Ultra Nail Boutique, Andy's Frozen Custard and Reafield Dental.

## Premier South Charlotte Retail Space Available



Joey Morganthall  
Director of Retail

(704) 367 5007  
jmorganthall@mpvre.com

Robbie Adams  
Director of Retail

(704) 248 2108  
radams@mpvre.com

2400 South Boulevard | Suite 300  
Charlotte, NC 28203

[mpvre.com](http://mpvre.com)

# Reafield Retail

9923 REA ROAD, WAXHAW, NC 28173

## Property Overview

### Demographics

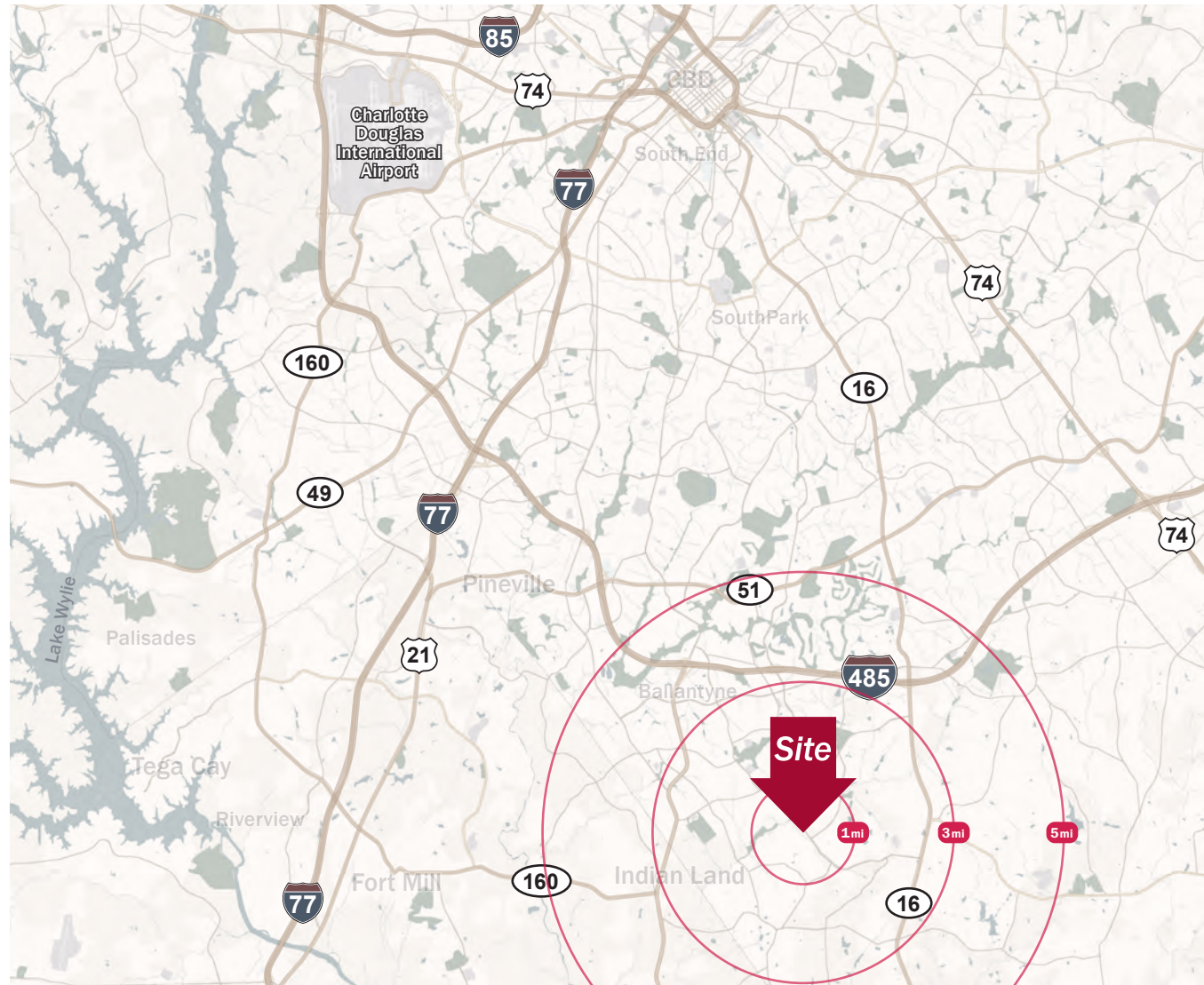
Source: Esri® 2024

	1 mile	3 mile	5 mile
Population	10,125	61,983	151,472
Growth Rate	-.03%	.44%	1.66%
Avg. HH Income	\$220,379	\$188,681	\$174,498

### Traffic Count

Source: NCDOT

	AADT
Rea Road	22,500 (2022)



Joey Morganthall  
Director of Retail

(704) 367 5007  
jmorganthall@mpvre.com

Robbie Adams  
Director of Retail

(704) 248 2108  
radams@mpvre.com

2400 South Boulevard | Suite 300  
Charlotte, NC 28203

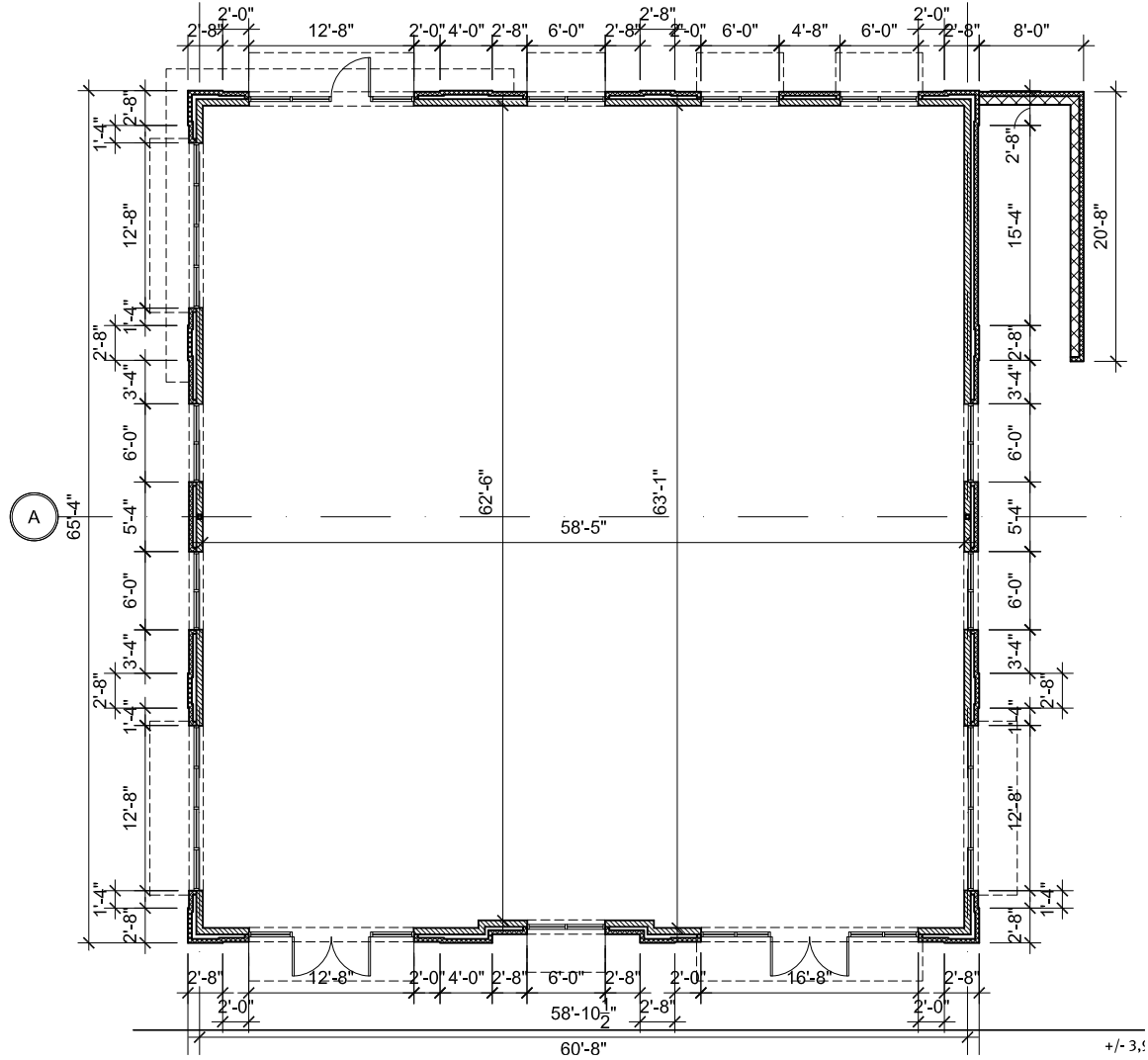
mpvre.com



# Reafield Retail

9923 REA ROAD, WAXHAW, NC 28173

## Floor Plan



Joey Morganthall  
Director of Retail

(704) 367 5007  
jmorganthall@mpvre.com

Robbie Adams  
Director of Retail

(704) 248 2108  
radams@mpvre.com

2400 South Boulevard | Suite 300  
Charlotte, NC 28203

mpvre.com

# Reafield Retail

9923 REA ROAD, WAXHAW, NC 28173

# Market Aerial



This GIS data is deemed reliable but provided "as is" without warranty of any representation of accuracy, timeliness, reliability or completeness. This map document does not represent a legal survey of the land and is for graphical purposes only. Use of this data for any purpose should be of acknowledgment of the limitations of the data, including the fact that the data is dynamic and is in a constant state of maintenance, correction, and update.



**Joey Morganthall**  
 Director of Retail  
 (704) 367 5007  
 jmorganthall@mpvre.com

**Robbie Adams**  
 Director of Retail  
 (704) 248 2108  
 radams@mpvre.com

2400 South Boulevard | Suite 300  
 Charlotte, NC 28203

[mpvre.com](http://mpvre.com)



# Reafield Retail

9923 REA ROAD, WAXHAW, NC 28173

## Site Aerial



Joey Morganthall  
Director of Retail

(704) 367 5007  
jmorganthall@mpvre.com

Robbie Adams  
Director of Retail

(704) 248 2108  
radams@mpvre.com

2400 South Boulevard | Suite 300  
Charlotte, NC 28203

mpvre.com



# Reafield Retail

9923 REA ROAD, WAXHAW, NC 28173

## Property Photos



Joey Morganthall  
Director of Retail

(704) 367 5007  
jmorganthall@mpvre.com

Robbie Adams  
Director of Retail

(704) 248 2108  
radams@mpvre.com

2400 South Boulevard | Suite 300  
Charlotte, NC 28203

[mpvre.com](http://mpvre.com)



# Reafield Retail

9923 REA ROAD, WAXHAW, NC 28173

## Property Photos



View from Rea Road



Reafield Sflaps



Joey Morganthall  
Director of Retail

(704) 367 5007  
jmorganthall@mpvre.com

Robbie Adams  
Director of Retail

(704) 248 2108  
radams@mpvre.com

2400 South Boulevard | Suite 300  
Charlotte, NC 28203

[mpvre.com](http://mpvre.com)



Working Together

Medical | Industrial | Retail | Land | Investment | Office

contact

**Joey Morganthall**  
*Director of Retail*

(704) 367 5007  
jmorganthall@mpvre.com

**Robbie Adams**  
*Director of Retail*

(704) 248 2108  
radams@mpvre.com

2400 South Boulevard | Suite 300  
Charlotte, NC 28203

[mpvre.com](http://mpvre.com)