

# Coltharp Road Land

1876 COLTHARP ROAD, FORT MILL, SC 29715



<b>Land</b>	<b>FOR</b>	<b>SIZE</b>	<b>PRICE</b>
	Sale	10.8 Acres	Call for Details



## Overview

10.8 acres located in fast-growing Fort Mill

In close proximity to Kingsley and Baxter Village

Parcels: #6550000011, #6550000057, #6550000083

Rezoning approved to RMX-6 in York County in 2022. Townhomes allowed by right subject to York County development standards.

Sewer connection likely needs to be on the north side of Coltharp Road in one of the Belford Drive manholes.

## Townhome Land Available For Sale in Fort Mill, SC



Bailey Patrick  
Managing Partner  
(704) 248 2102  
bpatrick@mpvre.com

Bailey Patrick Jr.  
Development Partner  
(704) 367 5020  
bwpatrick@mpvre.com

2400 South Boulevard | Suite 300  
Charlotte, NC 28203

[mpvre.com](http://mpvre.com)

# Coltharp Road Land

1876 COLTHARP ROAD, FORT MILL, SC 29715

## Property Overview

### Demographics

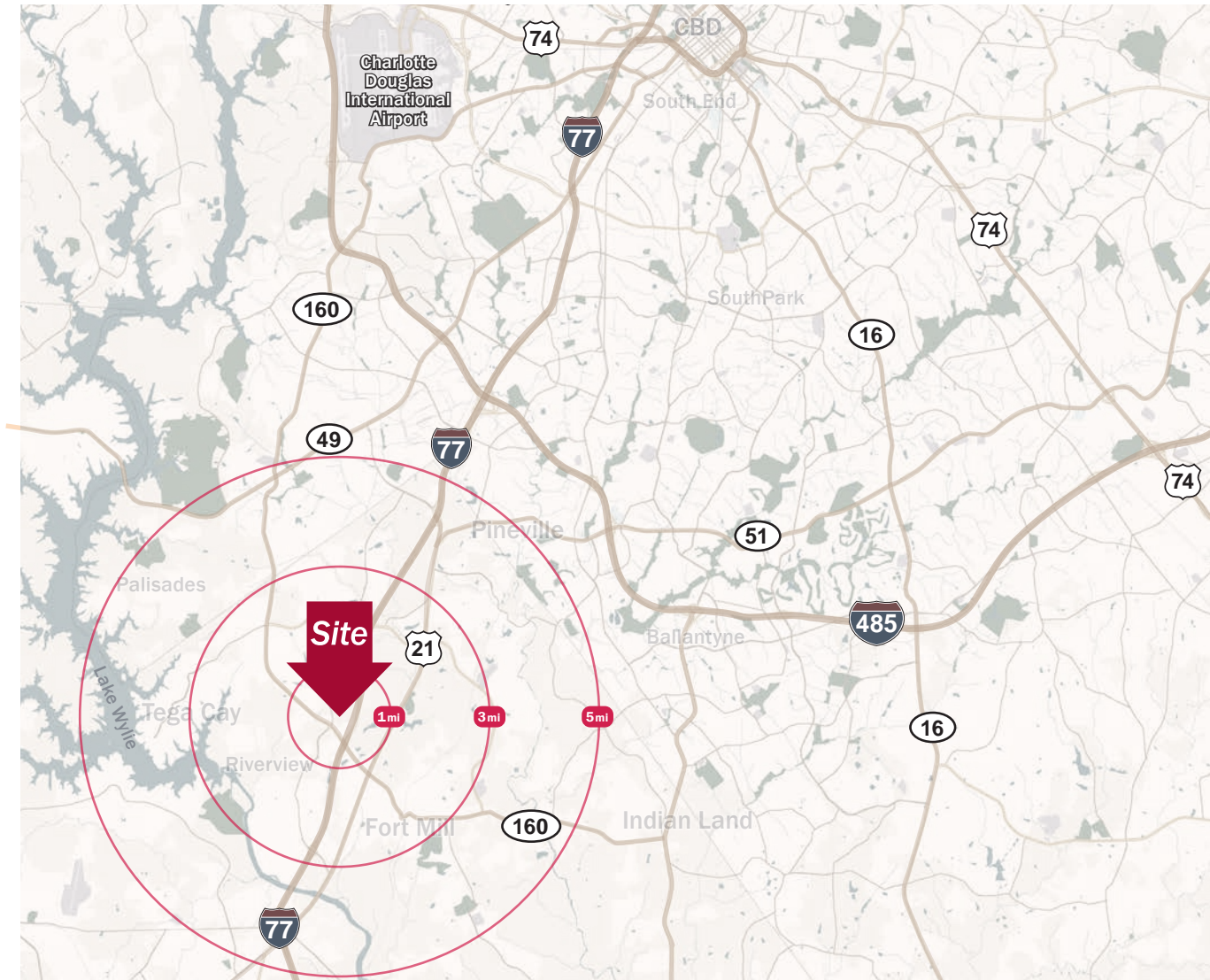
Source: Esri® 2024

	1 mile	3 mile	5 mile
Population	5,531	51,471	137,210
Growth Rate	1.44%	2.56%	3.37%
Avg. HH Income	\$158,391	\$146,317	\$145,470

### Traffic Count

Source: SCDOT

	AADT
I-77	120,200 (2024)
Hwy 160	36,800 (2024)



Bailey Patrick  
Managing Partner  
(704) 248 2102  
bpatrick@mpvre.com

Bailey Patrick Jr.  
Development Partner  
(704) 367 5020  
bwpatrick@mpvre.com

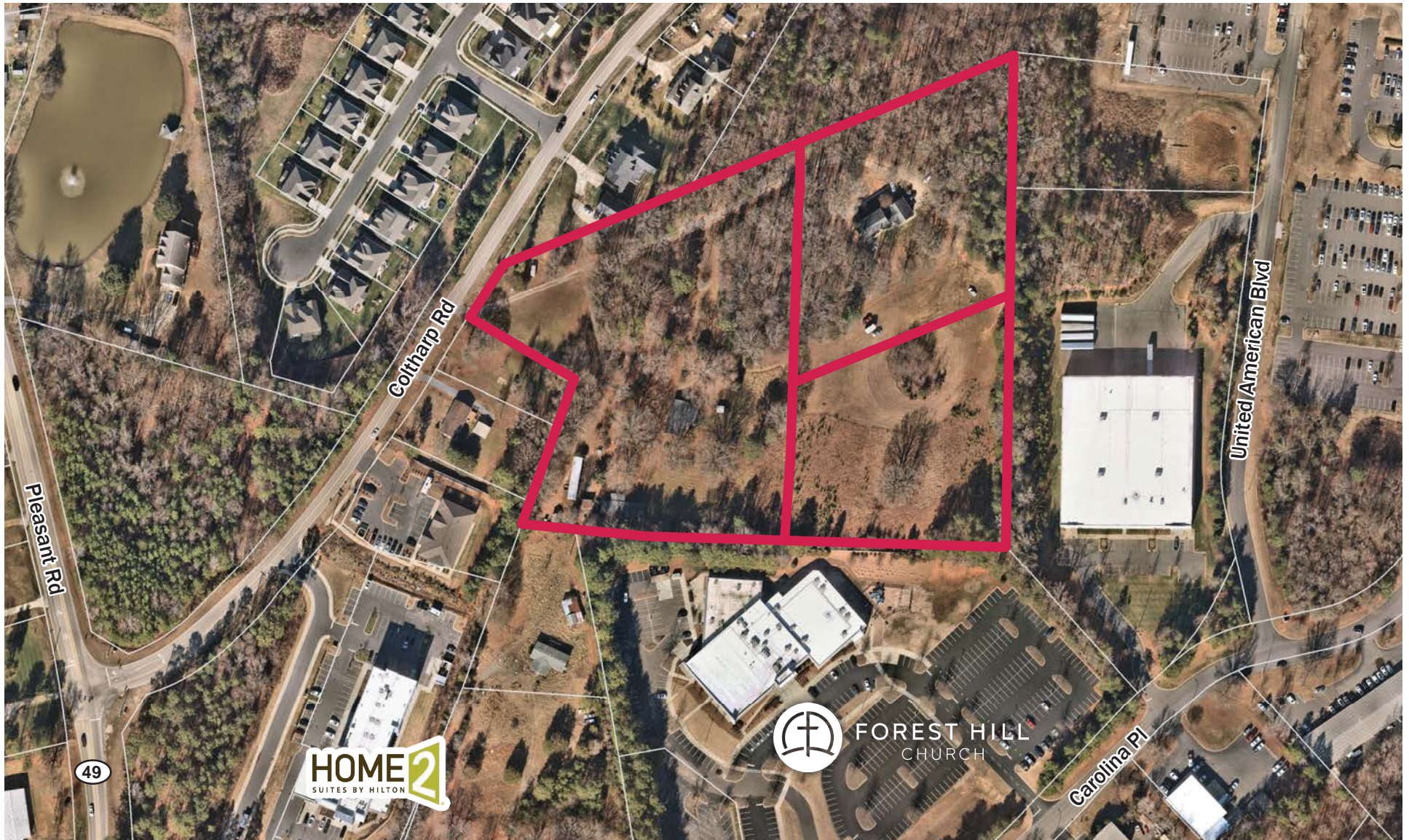
2400 South Boulevard | Suite 300  
Charlotte, NC 28203

[mpvre.com](http://mpvre.com)

# Coltharp Road Land

1876 COLTHARP ROAD, FORT MILL, SC 29715

**Location Aerial**



Bailey Patrick  
Managing Partner  
(704) 248 2102  
bpatrick@mpvre.com

Bailey Patrick Jr.  
Development Partner  
(704) 367 5020  
bwpatrick@mpvre.com

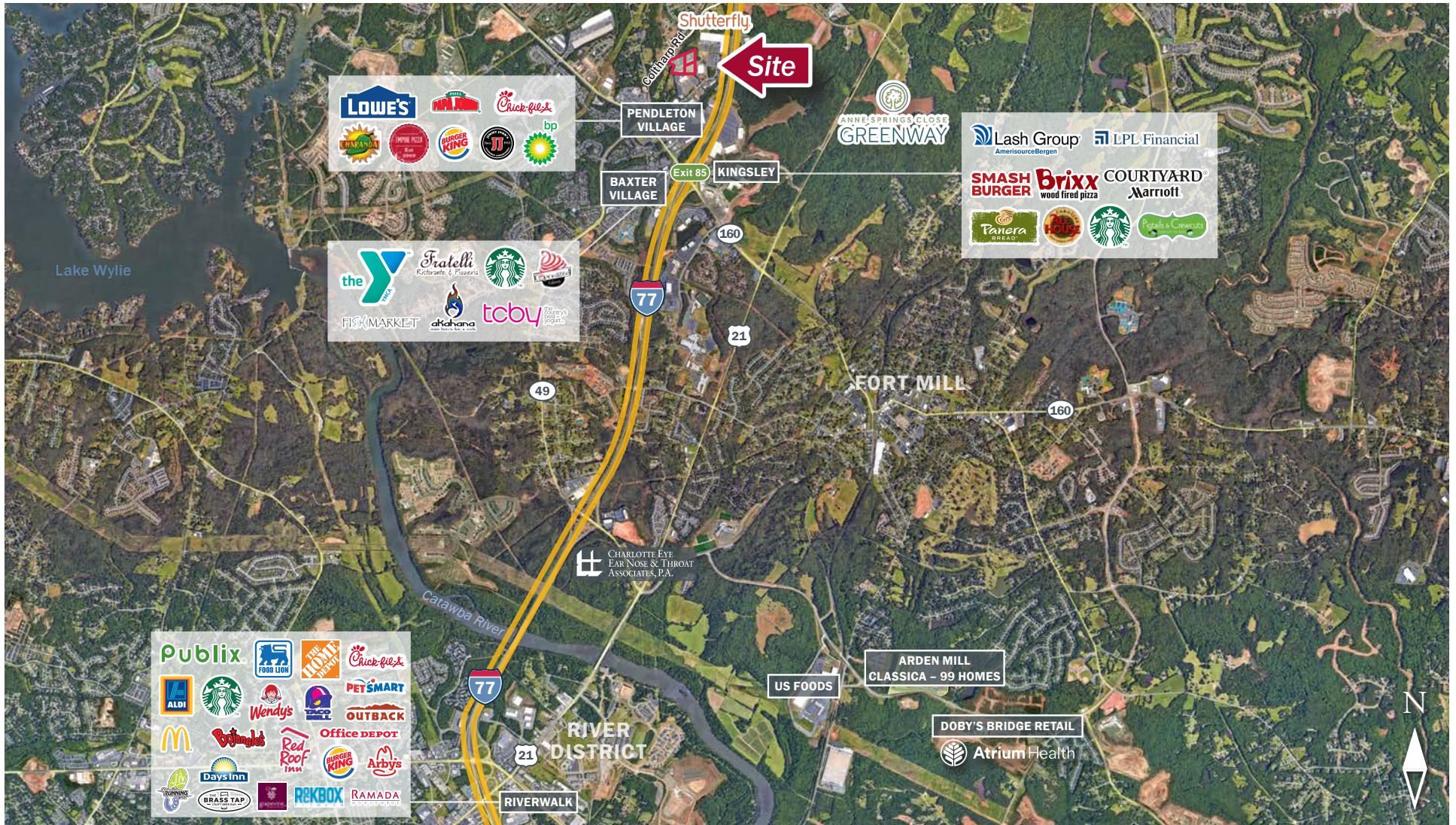
2400 South Boulevard | Suite 300  
Charlotte, NC 28203

[mpvre.com](http://mpvre.com)

# Coltharp Road Land

1876 COLTHARP ROAD, FORT MILL, SC 29715

## Market Aerial



This GIS data is deemed reliable but provided "as is" without warranty of any representation of accuracy, timeliness, reliability or completeness. This map document does not represent a legal survey of the land and is for graphical purposes only. Use of this data for any purpose should be of acknowledgment of the limitations of the data, including the fact that the data is dynamic and is in a constant state of maintenance, correction, and update.



**Bailey Patrick**  
Managing Partner  
(704) 248 2102  
bpatrick@mpvre.com

**Bailey Patrick Jr.**  
Development Partner  
(704) 367 5020  
bwpatrick@mpvre.com

2400 South Boulevard | Suite 300  
Charlotte, NC 28203

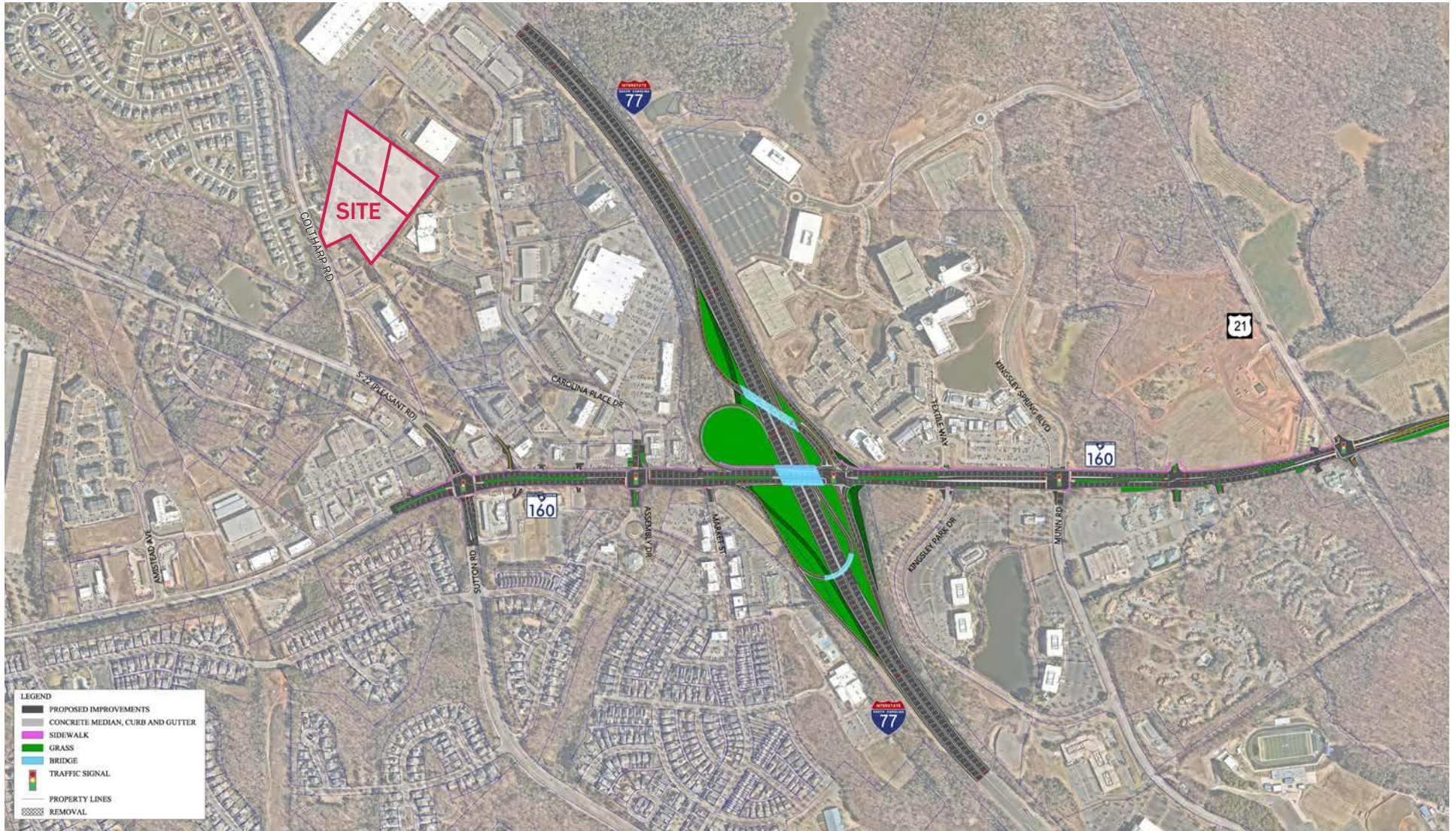
[mpvre.com](http://mpvre.com)

# Coltharp Road Land

1876 COLTHARP ROAD, FORT MILL, SC 29715

SCDOT Plans

SC 160 Interchange Reconfiguration at I-77 in York County. Project details can be found here: <https://sc-160at-i-77-scdot.hub.arcgis.com/pages/explore-the-project>



**Bailey Patrick**  
Managing Partner  
(704) 248 2102  
bpatrick@mpvre.com

**Bailey Patrick Jr.**  
Development Partner  
(704) 367 5020  
bwpatrick@mpvre.com

2400 South Boulevard | Suite 300  
Charlotte, NC 28203

[mpvre.com](http://mpvre.com)



Working Together

Medical | Industrial | Retail | Land | Investment | Office

contact

**Bailey Patrick**  
*Managing Partner*  
(704) 248 2102  
bpatrick@mpvre.com

**Bailey Patrick Jr.**  
*Development Partner*  
(704) 367 5020  
bwpatrick@mpvre.com

2400 South Boulevard | Suite 300  
Charlotte, NC 28203

[mpvre.com](http://mpvre.com)