

Shops at Centerline

12906 N TRYON ST, CHARLOTTE, NC 28262



Retail

FOR

Lease

SIZE

1,200 - 7,700 SF

PRICE

Call for Pricing



Overview

New construction mixed use development with Retail / Medical buildings fronting Hwy 29 alongside ± 350 new apartment units and ± 250 townhomes

Adjacent to Charlotte Motor Speedway, The Dirt Track, zMax Dragway and Ten Tenths Motor Club, driving 1.25M+ annual visitors and \$450M+ annual economic impact

Located just 1.67 miles from interstate 485 and 2 miles from interstate 85

Minutes from Concord Mills Mall, the top tourist attraction in North Carolina

56,000+ residents within a 3-mile radius with continued residential growth

Delivery Q3 2027

New Retail/Medical Space for Lease



Kevin Judd
Broker

(704) 367 5025
kjudd@mpvre.com

Joey Morganthall
Director of Retail

(704) 367 5007
jmorganthall@mpvre.com

2400 South Boulevard | Suite 300
Charlotte, NC 28203

mpvre.com

Shops at Centerline

12906 N TRYON ST, CHARLOTTE, NC 28262

Property Overview

Demographics

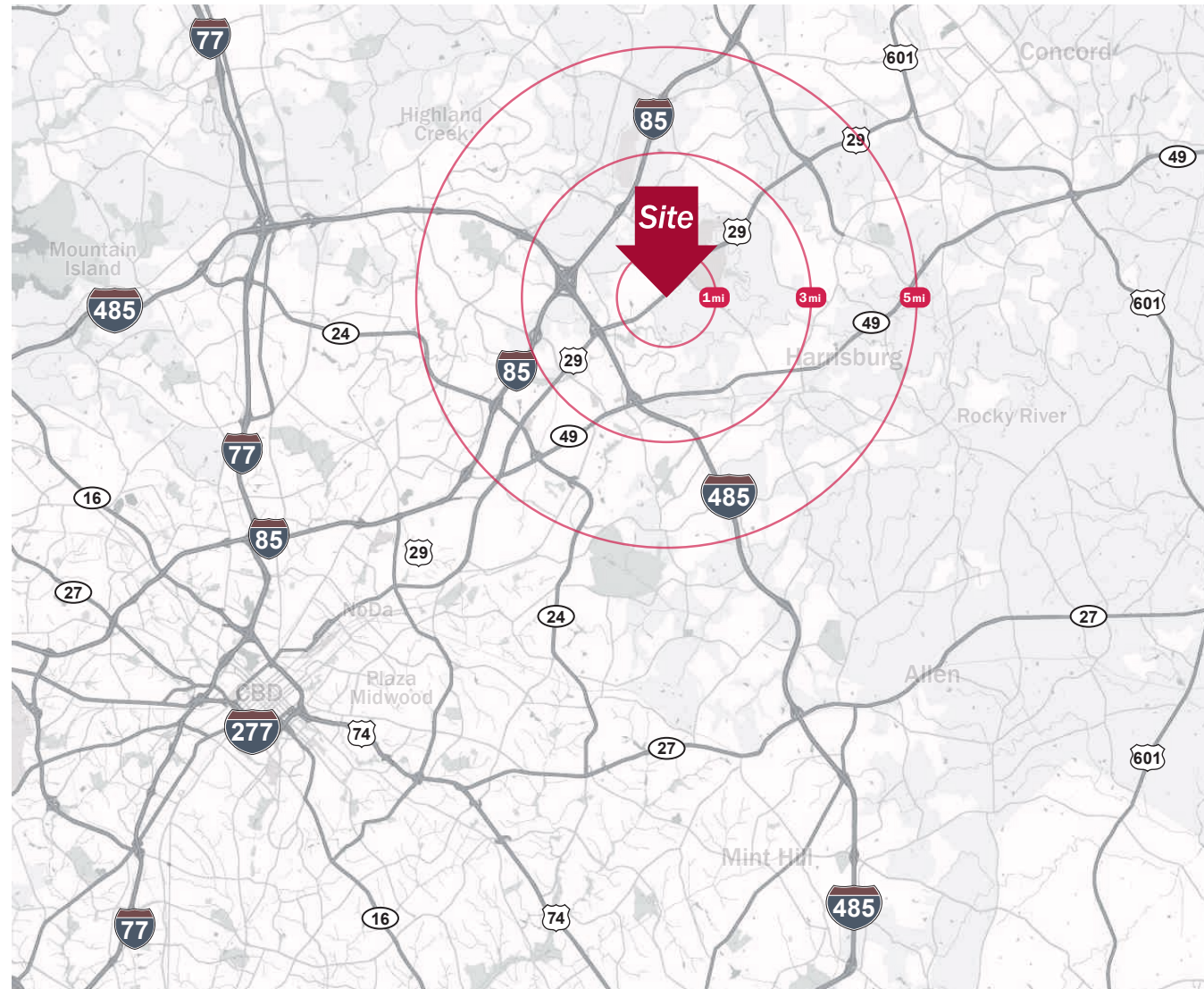
Source: Esri® 2026

	1 mile	3 mile	5 mile
Population	3,741	56,214	162,076
Growth Rate	4.23%	2.24%	2.43%
Avg. HH Income	\$132,386	\$100,522	\$117,550

Traffic Count

Source: Esri® 2026

	AADT
Hwy 29 (N Tryon St)	20,000



Kevin Judd
Broker

(704) 367 5025
kjudd@mpvre.com

Joey Morganthall
Director of Retail

(704) 367 5007
jmorganthall@mpvre.com

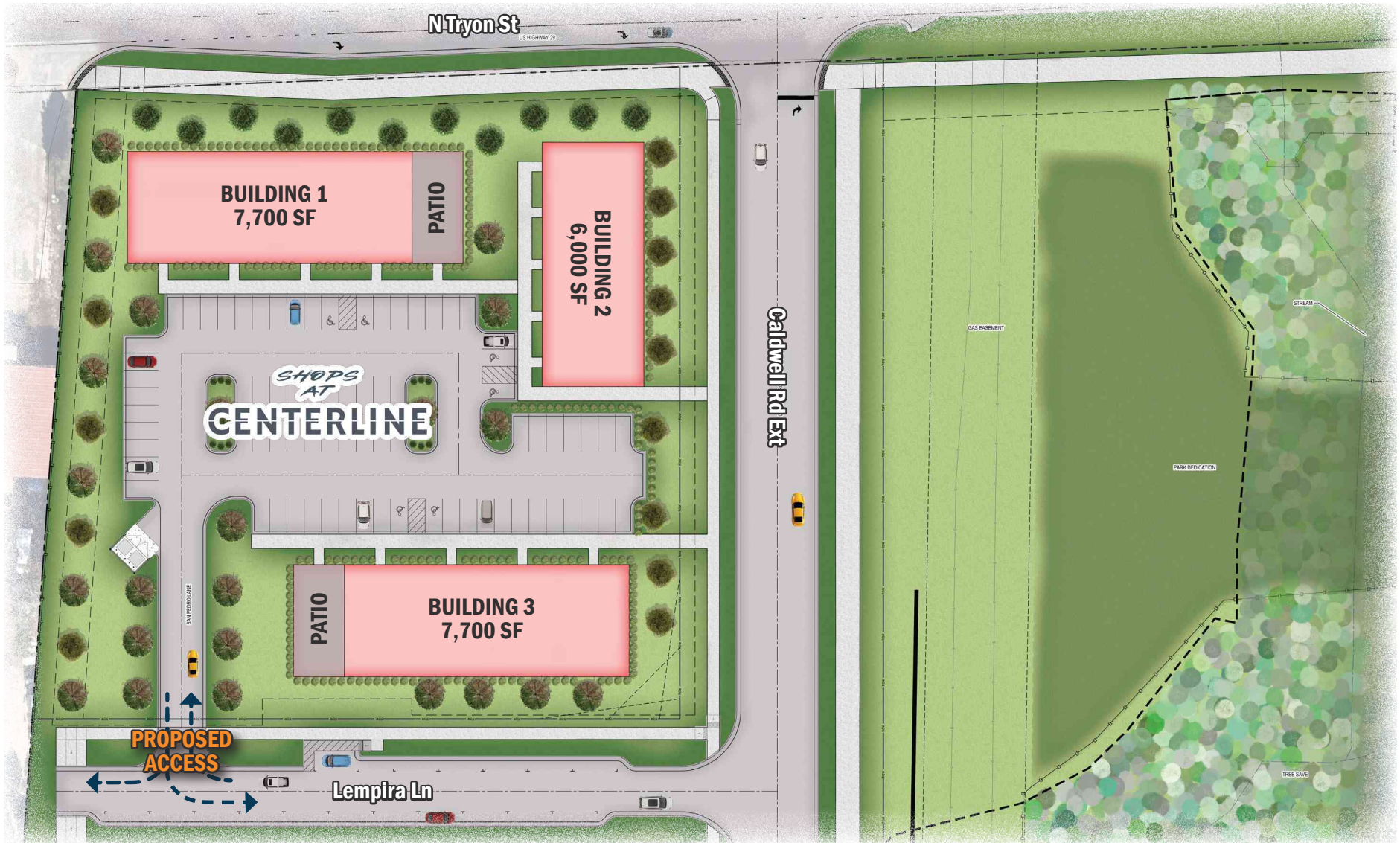
2400 South Boulevard | Suite 300
Charlotte, NC 28203

mpvre.com

Shops at Centerline

12906 N TRYON ST, CHARLOTTE, NC 28262

Site Plan



Kevin Judd
Broker

(704) 367 5025
kjudd@mpvre.com

Joey Morganthall
Director of Retail

(704) 367 5007
jmorganthall@mpvre.com

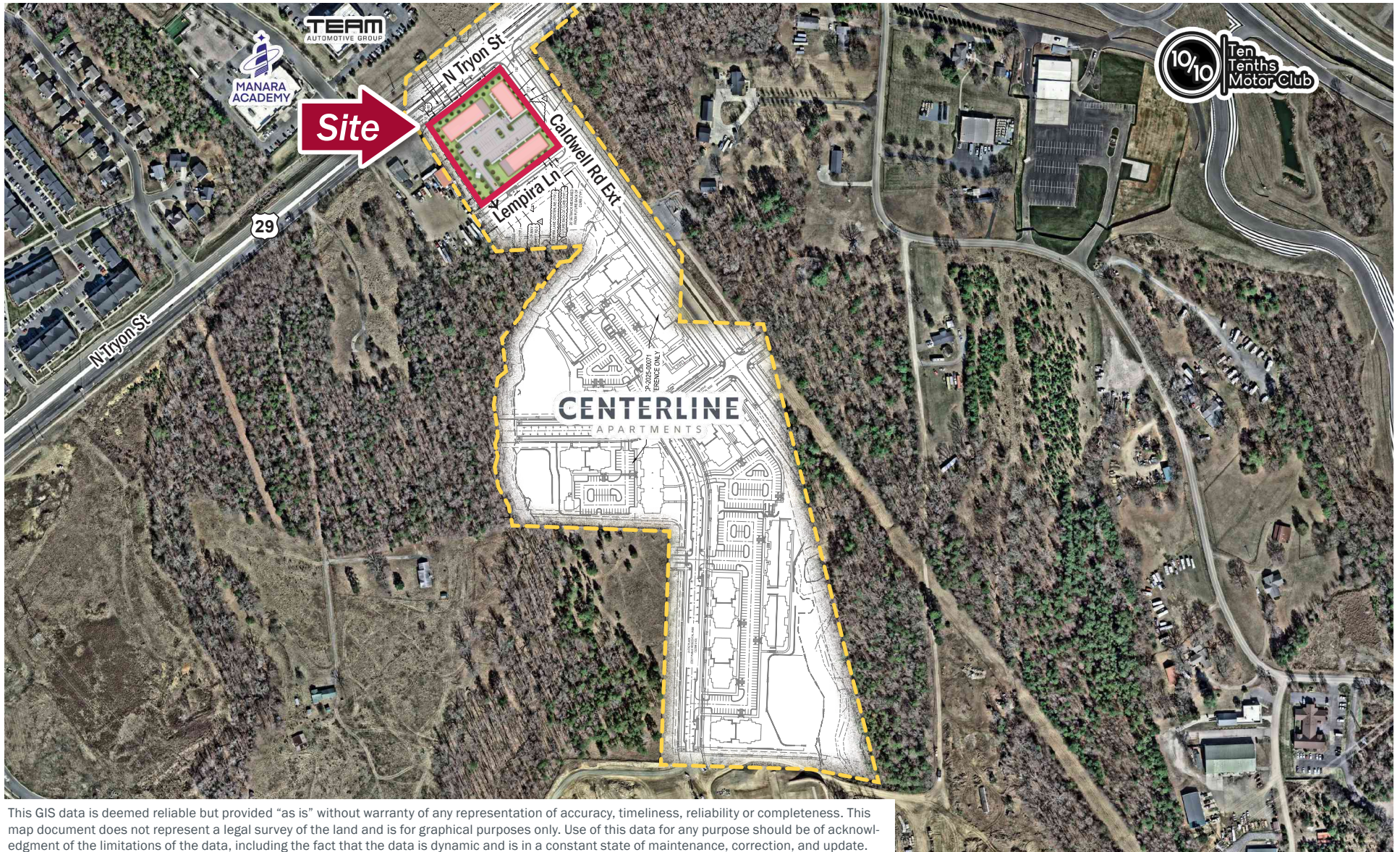
2400 South Boulevard | Suite 300
Charlotte, NC 28203

mpvre.com

Shops at Centerline

12906 N TRYON ST, CHARLOTTE, NC 28262

Site Aerial



This GIS data is deemed reliable but provided "as is" without warranty of any representation of accuracy, timeliness, reliability or completeness. This map document does not represent a legal survey of the land and is for graphical purposes only. Use of this data for any purpose should be of acknowledgment of the limitations of the data, including the fact that the data is dynamic and is in a constant state of maintenance, correction, and update.



Kevin Judd
Broker
(704) 367 5025
kjudd@mpvre.com

Joey Morganthall
Director of Retail
(704) 367 5007
jmorganthall@mpvre.com

2400 South Boulevard | Suite 300
Charlotte, NC 28203

mpvre.com

Shops at Centerline

12906 N TRYON ST, CHARLOTTE, NC 28262

Proximity Aerial



Kevin Judd
Broker
(704) 367 5025
kjudd@mpvre.com

Joey Morganthall
Director of Retail
(704) 367 5007
jmorganthall@mpvre.com

2400 South Boulevard | Suite 300
Charlotte, NC 28203

mpvre.com

Shops at Centerline

12906 N TRYON ST, CHARLOTTE, NC 28262

Area Attractions



Kevin Judd
Broker
(704) 367 5025
kjudd@mpvre.com

Joey Morganthall
Director of Retail
(704) 367 5007
jmorganthall@mpvre.com

2400 South Boulevard | Suite 300
Charlotte, NC 28203

mpvre.com

Shops at Centerline

12906 N TRYON ST, CHARLOTTE, NC 28262

Market Aerial



This GIS data is deemed reliable but provided "as is" without warranty of any representation of accuracy, timeliness, reliability or completeness. This map document does not represent a legal survey of the land and is for graphical purposes only. Use of this data for any purpose should be of acknowledgment of the limitations of the data, including the fact that the data is dynamic and is in a constant state of maintenance, correction, and update.



Kevin Judd
Broker
(704) 367 5025
kjudd@mpvre.com

Joey Morganthall
Director of Retail
(704) 367 5007
jmorganthall@mpvre.com

2400 South Boulevard | Suite 300
Charlotte, NC 28203

mpvre.com



Medical | Industrial | Retail | Land | Investment | Office

contact

Kevin Judd
Broker
(704) 367 5025
kjudd@mpvre.com

Joey Morganthall
Director of Retail
(704) 367 5007
jmorganthall@mpvre.com

2400 South Boulevard | Suite 300
Charlotte, NC 28203

mpvre.com