

Highway 601 & 49 Land

CONCORD, NC 28025

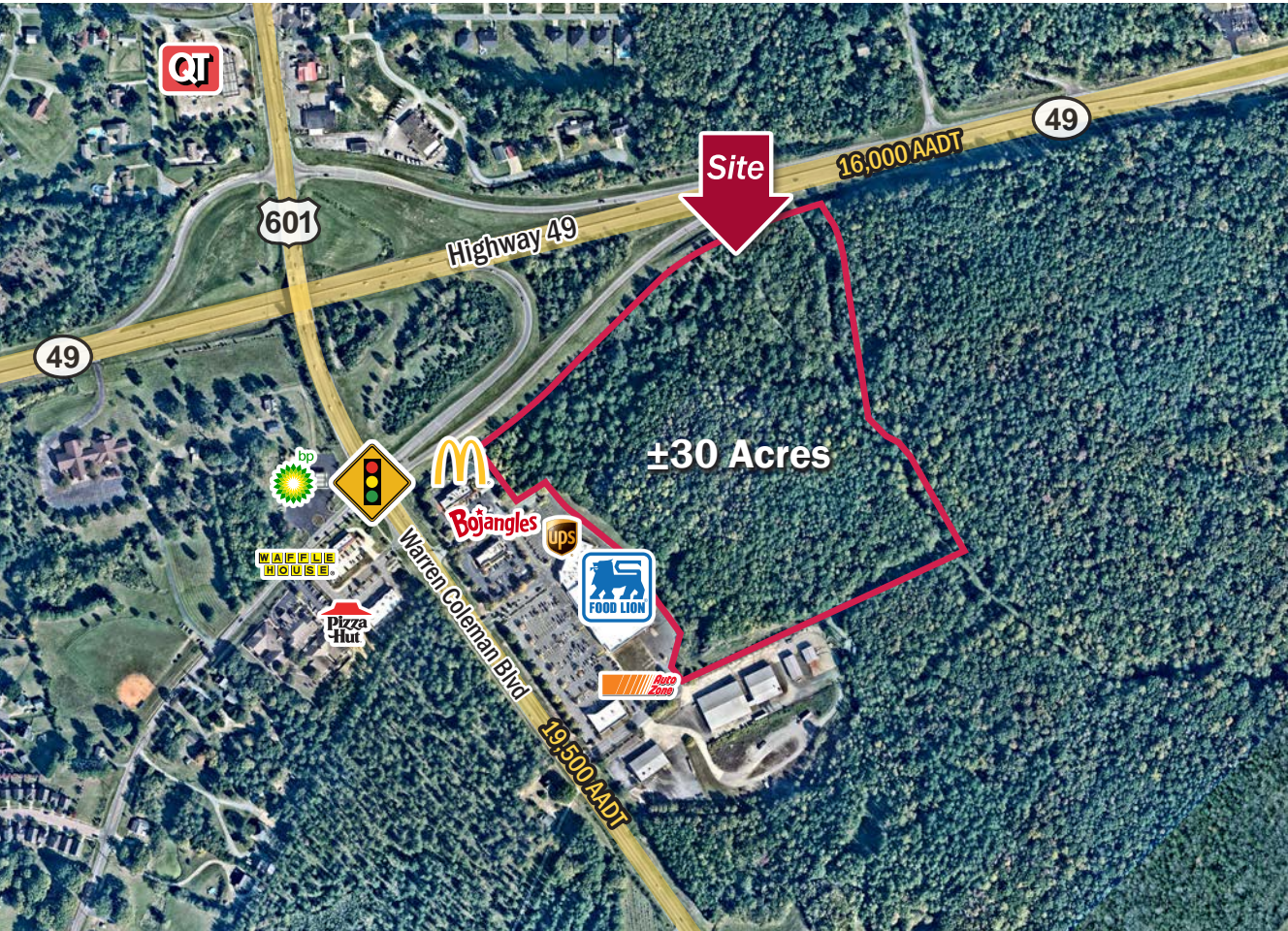


Land

FOR
Sale

SIZE
±30 AC

PRICE
Call for Pricing



Overview

Portion of Cabarrus County PIN #5539944060

City of Concord Zoning: General Commercial District (C-2) – seller may sell subject to rezoning

Located behind the Southgate Commons shopping center anchored by Food Lion with access easements in place

Sewer Easement located along Cold Water Creek and Water line in Hwy 601 – capacity not guaranteed and to be determined by buyer

Located: ~3.25 miles to Concord
~7.5 miles to I-85

±30 Acres of Commercial Land for Sale



J. Nolan Mills
Senior Vice President
(704) 248 2133
nmills@mpvre.com

Chad Pyke
Broker
(704) 561 5238
cpyke@mpvre.com

2400 South Boulevard | Suite 300
Charlotte, NC 28203

mpvre.com

Highway 601 & 49 Land

CONCORD, NC 28025

Property Overview

Demographics

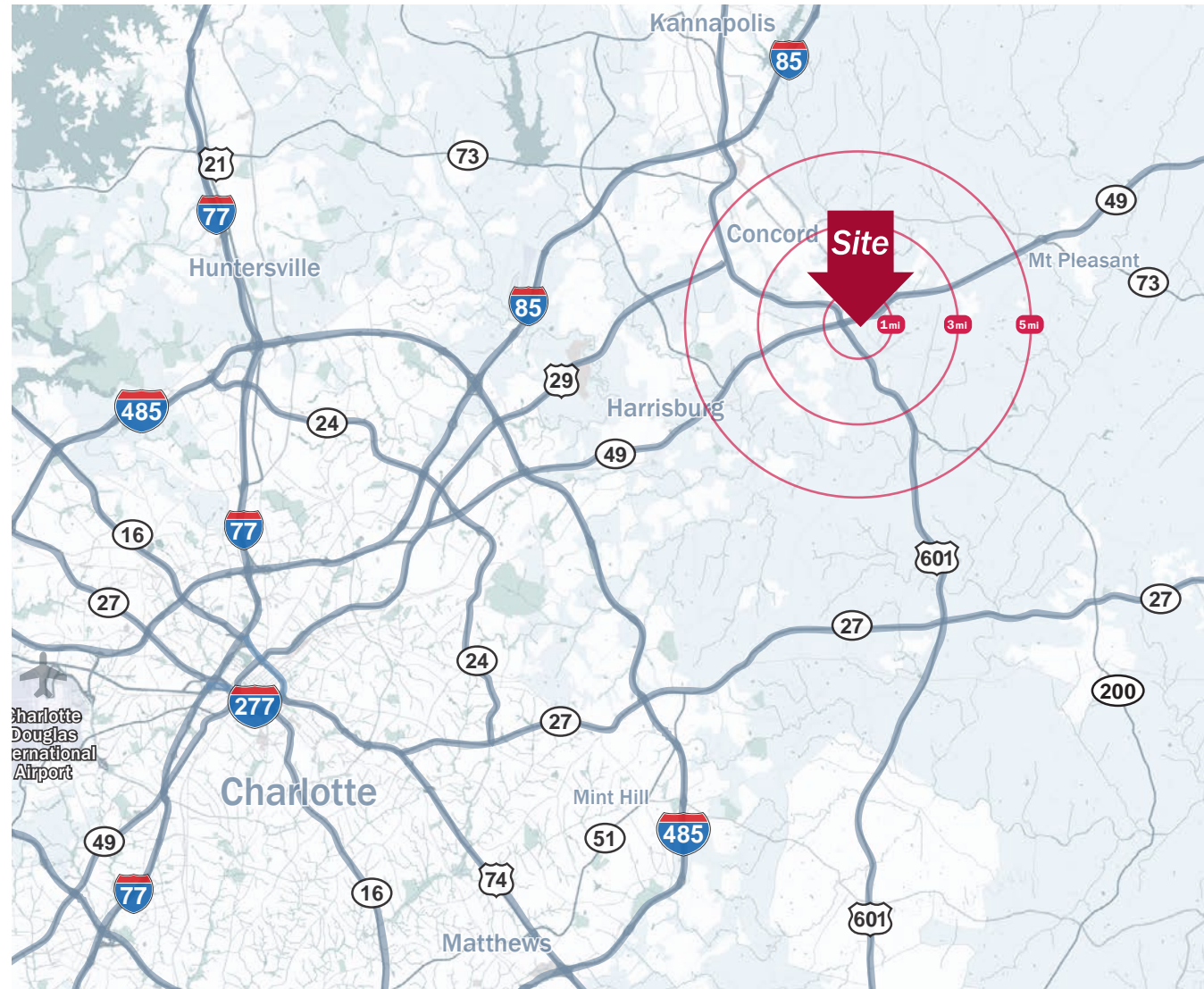
Source: Esri@ 2026

	1 mile	3 mile	5 mile
Population	3,113	31,625	67,296
Growth Rate	0.91%	1.05%	1.36%
Avg. HH Income	\$98,255	\$104,574	\$102,664

Traffic Count

Source: SCDOT 2026

	AADT
Highway 49	16,000
Highway 601	19,500



J. Nolan Mills
Senior Vice President
(704) 248 2133
nmills@mpvre.com

Chad Pyke
Broker
(704) 561 5238
cpyke@mpvre.com

2400 South Boulevard | Suite 300
Charlotte, NC 28203

mpvre.com

Highway 601 & 49 Land

CONCORD, NC 28025

Site Topography



This GIS data is deemed reliable but provided "as is" without warranty of any representation of accuracy, timeliness, reliability or completeness. This map document does not represent a legal survey of the land and is for graphical purposes only. Use of this data for any purpose should be of acknowledgment of the limitations of the data, including the fact that the data is dynamic and is in a constant state of maintenance, correction, and update.



J. Nolan Mills
Senior Vice President
(704) 248 2133
nmills@mpvre.com

Chad Pyke
Broker
(704) 561 5238
cpyke@mpvre.com

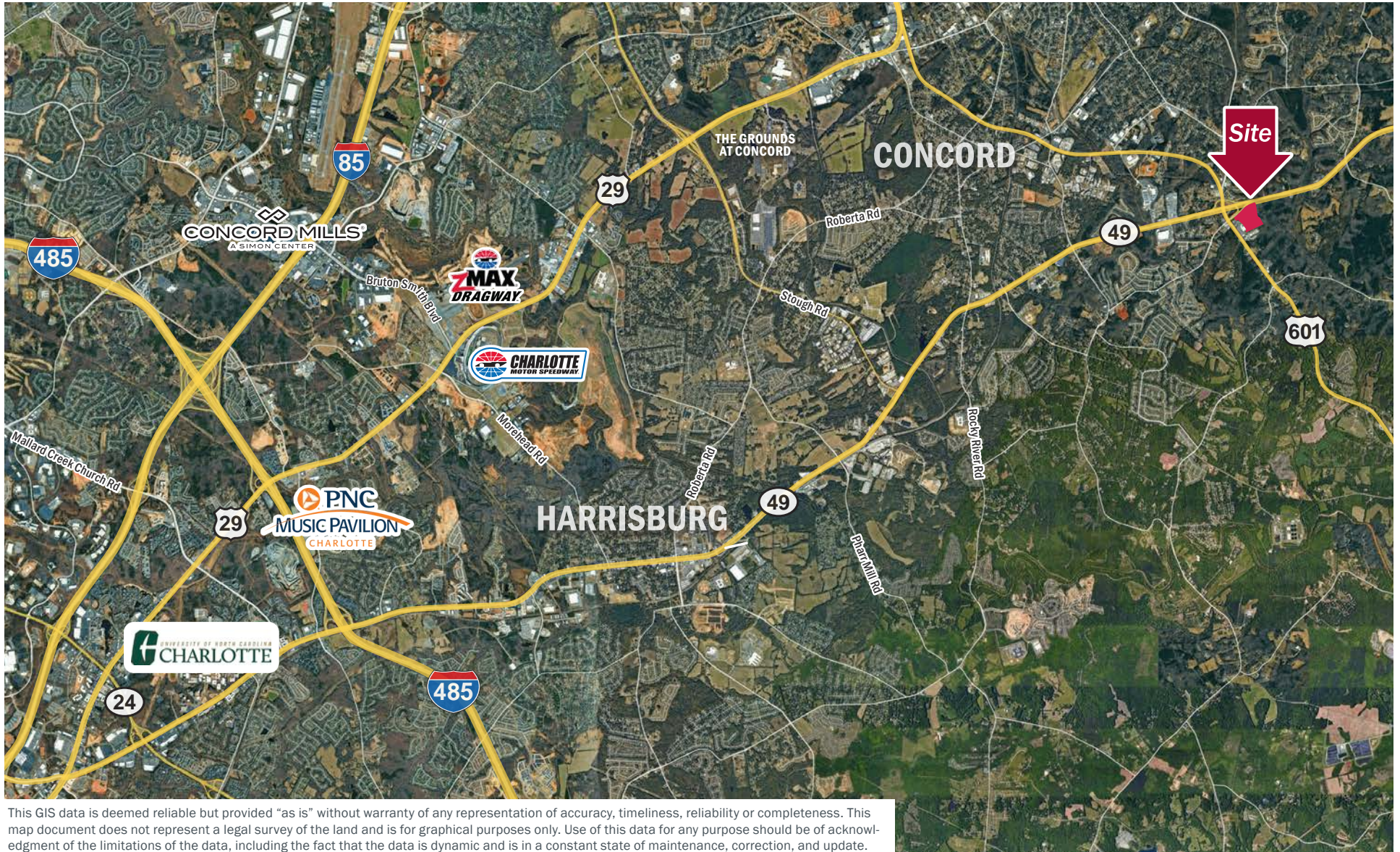
2400 South Boulevard | Suite 300
Charlotte, NC 28203

mpvre.com

Highway 601 & 49 Land

CONCORD, NC 28025

Market Aerial



This GIS data is deemed reliable but provided "as is" without warranty of any representation of accuracy, timeliness, reliability or completeness. This map document does not represent a legal survey of the land and is for graphical purposes only. Use of this data for any purpose should be of acknowledgment of the limitations of the data, including the fact that the data is dynamic and is in a constant state of maintenance, correction, and update.



J. Nolan Mills
Senior Vice President
(704) 248 2133
nmills@mpvre.com

Chad Pyke
Broker
(704) 561 5238
cpyke@mpvre.com

2400 South Boulevard | Suite 300
Charlotte, NC 28203

mpvre.com



Medical | Industrial | Retail | Land | Investment | Office

contact

J. Nolan Mills
Senior Vice President
(704) 248 2133
nmills@mpvre.com

Chad Pyke
Broker
(704) 561 5238
cpyke@mpvre.com

2400 South Boulevard | Suite 300
Charlotte, NC 28203

mpvre.com