

Rock Hill Commercial



MT. GALLANT RD & MUSEUM RD, ROCK HILL, SC

Land

FOR

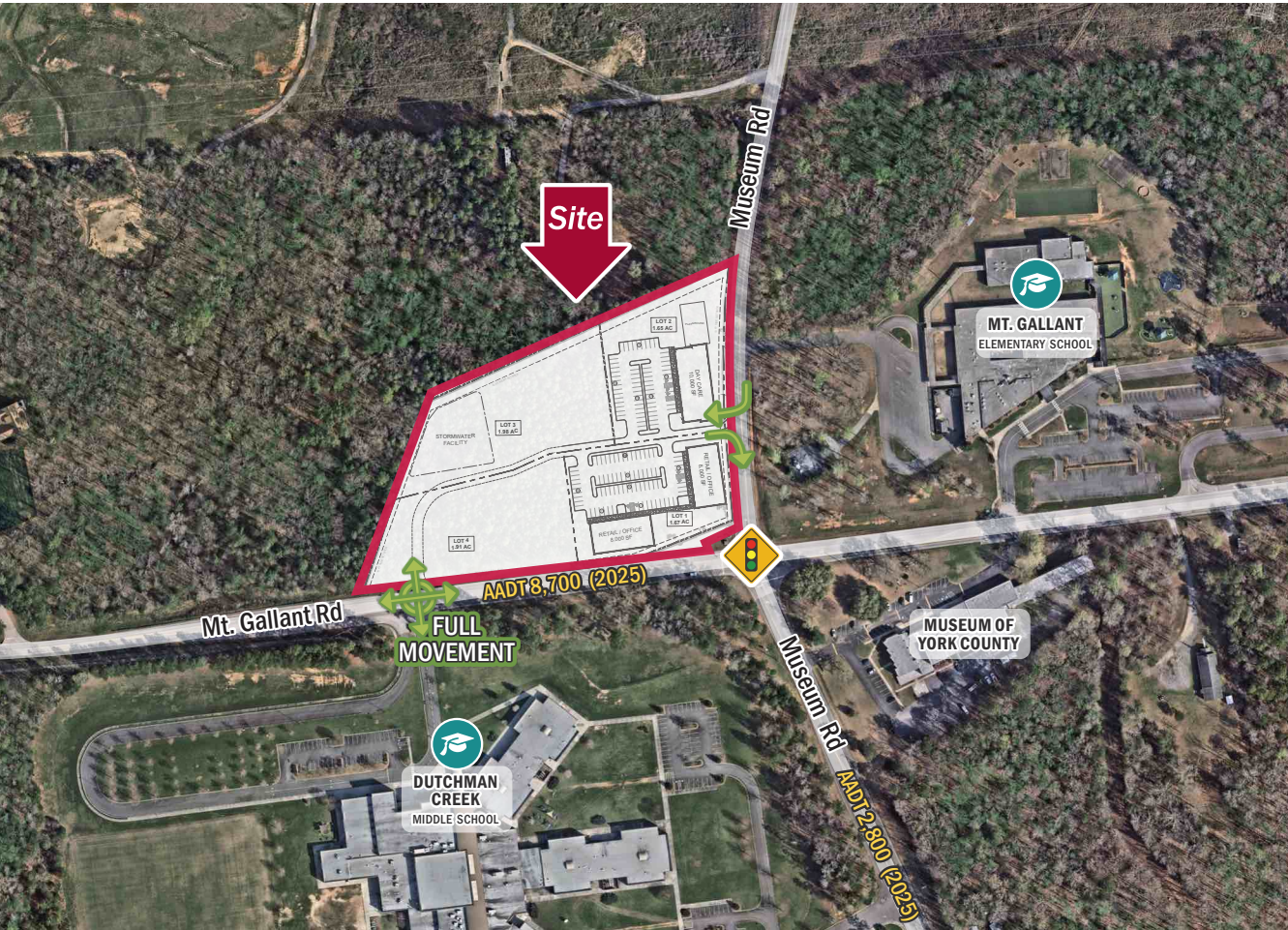
Sale or Ground Lease

SIZE

±8 Acres

PRICE

Call for Pricing



Overview

+/-8 Ac. site zoned Neighborhood Commercial

Uses allowed per zoning include medical office, office, daycare, traditional retail and services

Signalized intersection to the site

Near proposed Del Webb, master-planned 620+ Unit residential development by Pulte

Average Household income:

1 mile	3 miles	5 miles
--------	---------	---------

\$135,249	\$143,937	\$135,196
-----------	-----------	-----------

±8 Acres of Rock Hill, SC Neighborhood Commercial



Robbie Adams
Director of Retail
(704) 248 2108
radams@mpvre.com

Justin P. Holofchak
Managing Partner
(704) 577 4343
jholofchak@mpvre.com

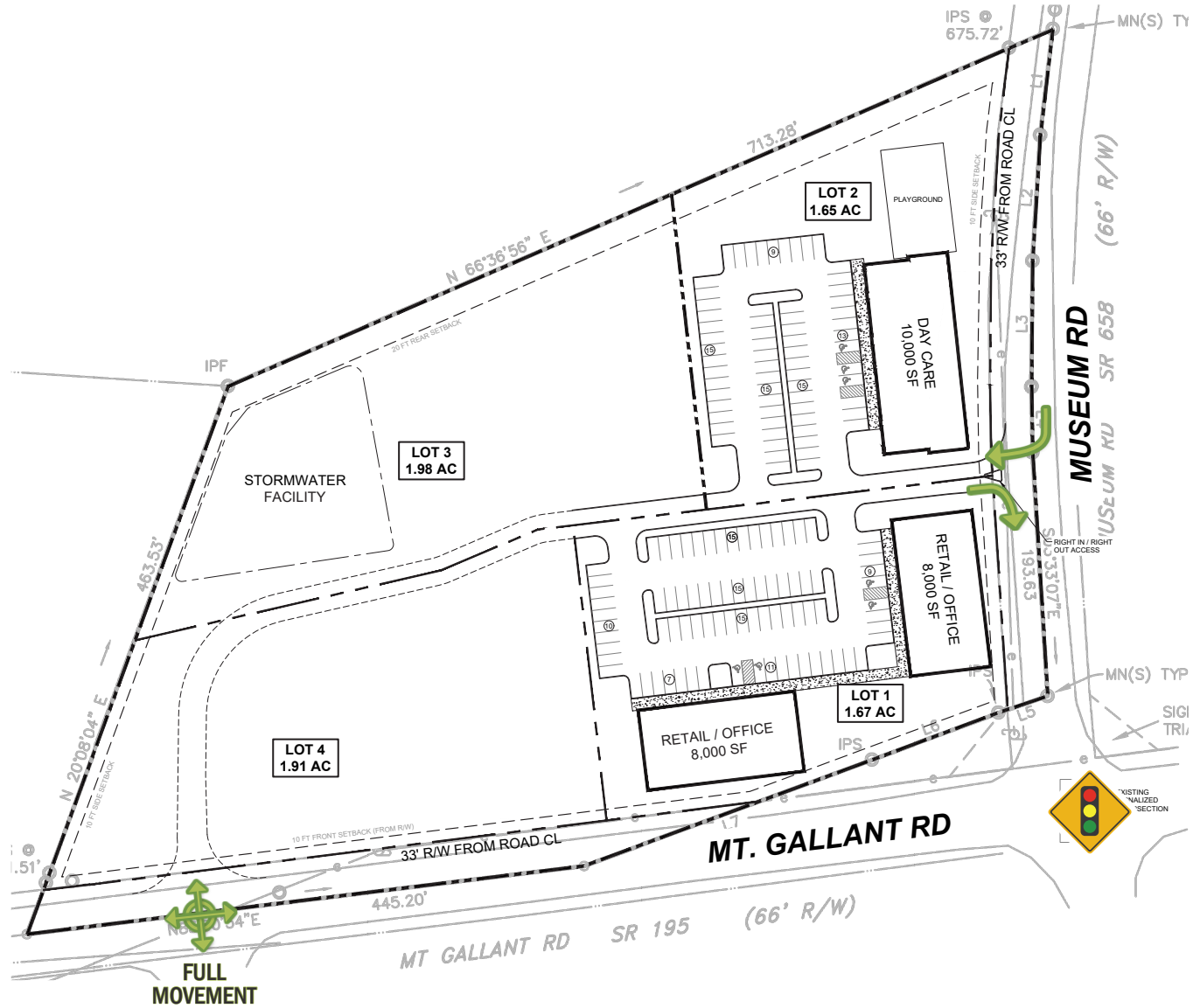
2400 South Boulevard | Suite 300
Charlotte, NC 28203

mpvre.com

Rock Hill Commercial

MT. GALLANT RD & MUSEUM RD, ROCK HILL, SC

Conceptual Site Plan



Robbie Adams
Director of Retail
(704) 248 2108
radams@mpvre.com

Justin P. Holofchak
Managing Partner
(704) 577 4343
jholofchak@mpvre.com

2400 South Boulevard | Suite 300
Charlotte, NC 28203

mpvre.com

Rock Hill Commercial

MT. GALLANT RD & MUSEUM RD, ROCK HILL, SC

Market Aerial



Robbie Adams
 Director of Retail
 (704) 248 2108
 radams@mpvre.com

Justin P. Holofchak
 Managing Partner
 (704) 577 4343
 jholofchak@mpvre.com

2400 South Boulevard | Suite 300
 Charlotte, NC 28203

mpvre.com

Rock Hill Commercial

MT. GALLANT RD & MUSEUM RD, ROCK HILL, SC

Residential Activity

New Housing Activity within 5 Miles

Source: Zonda® 2026

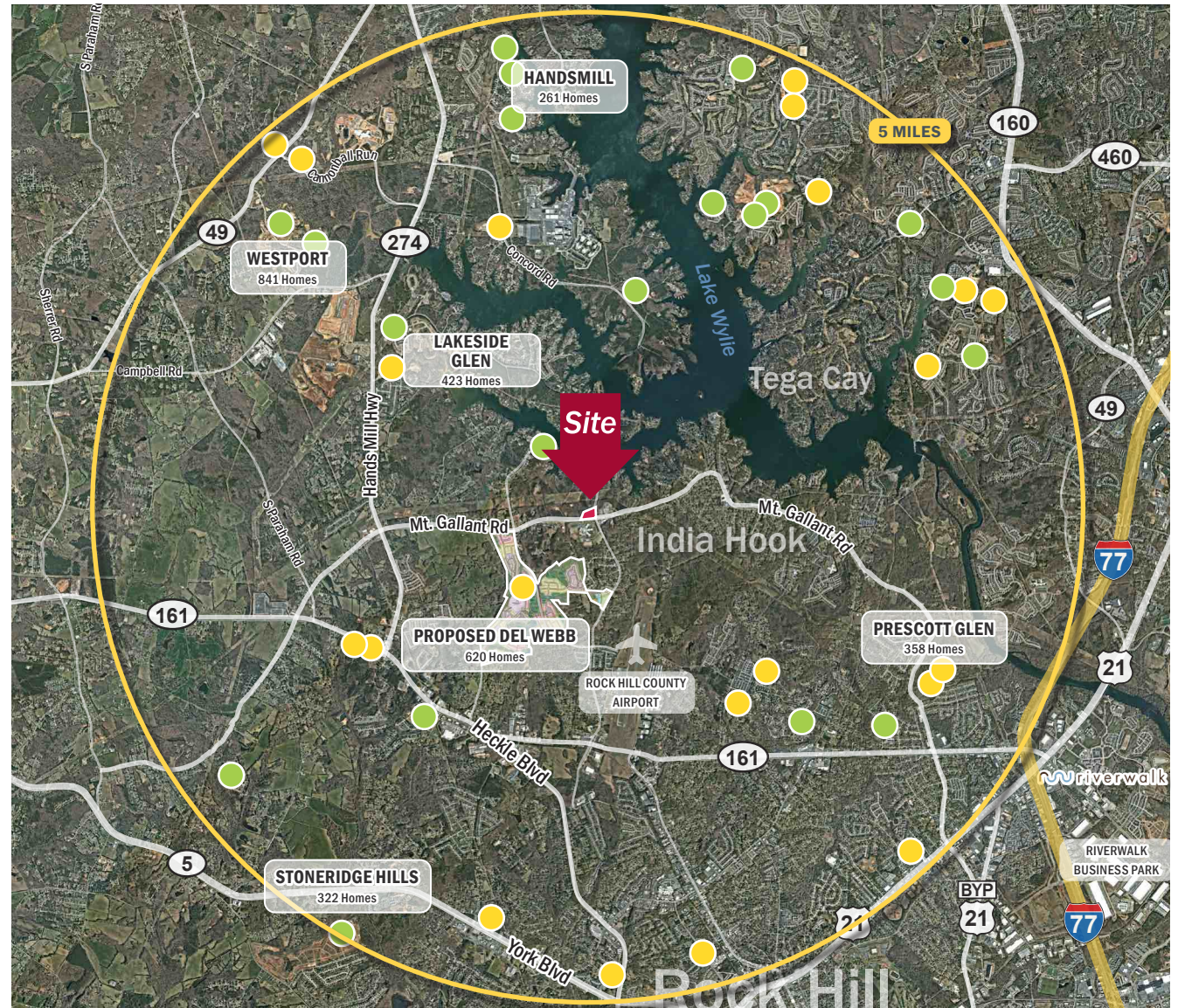
	5 miles
Existing Units ¹	35,540
Active Units (Under Construction)	1,239
Future Units	3,642
Total	40,421
	Units within 5 miles

¹Source : Esri® 2026

Subdivision Status

- Future
- Active

This GIS data is deemed reliable but provided "as is" without warranty of any representation of accuracy, timeliness, reliability or completeness. This map document does not represent a legal survey of the land and is for graphical purposes only. Use of this data for any purpose should be of acknowledgment of the limitations of the data, including the fact that the data is dynamic and is in a constant state of maintenance, correction, and update.



Robbie Adams
 Director of Retail
 (704) 248 2108
 radams@mpvre.com

Justin P. Holofchak
 Managing Partner
 (704) 577 4343
 jholofchak@mpvre.com

2400 South Boulevard | Suite 300
 Charlotte, NC 28203

mpvre.com



Working Together

Medical | Industrial | Retail | Land | Investment | Office

contact

Robbie Adams
Director of Retail
(704) 248 2108
radams@mpvre.com

Justin P. Holofchak
Managing Partner
(704) 577 4343
jholofchak@mpvre.com

2400 South Boulevard | Suite 300
Charlotte, NC 28203

mpvre.com