

# Galleria Blvd Retail

780 GALLERIA BLVD, ROCK HILL, SC 29730



**Retail**

**FOR**

| Lease

**SIZE**

| ±10,000 SF

**PRICE**

| Call for Pricing



## Overview

New ±10,000 square foot retail development adjacent to Spark by Hilton and Tru by Hilton hotels

---

Proposed endcap with drive-thru

---

Prominent visibility along Galleria Blvd. and direct proximity to the Dave Lyle Blvd. retail corridor

---

Excellent opportunity for restaurant, retail or medical users

---

## ±10,000 SF Planned Retail/Medical Building for Lease



**Davis Kirby**  
Broker

(704) 367 5018  
dkirby@mpvre.com

**Robbie Adams**  
Director of Retail

(704) 248 2108  
radams@mpvre.com

2400 South Boulevard | Suite 300  
Charlotte, NC 28203

[mpvre.com](http://mpvre.com)

# Galleria Blvd Retail

780 GALLERIA BLVD, ROCK HILL, SC 29730

## Property Overview

### Demographics

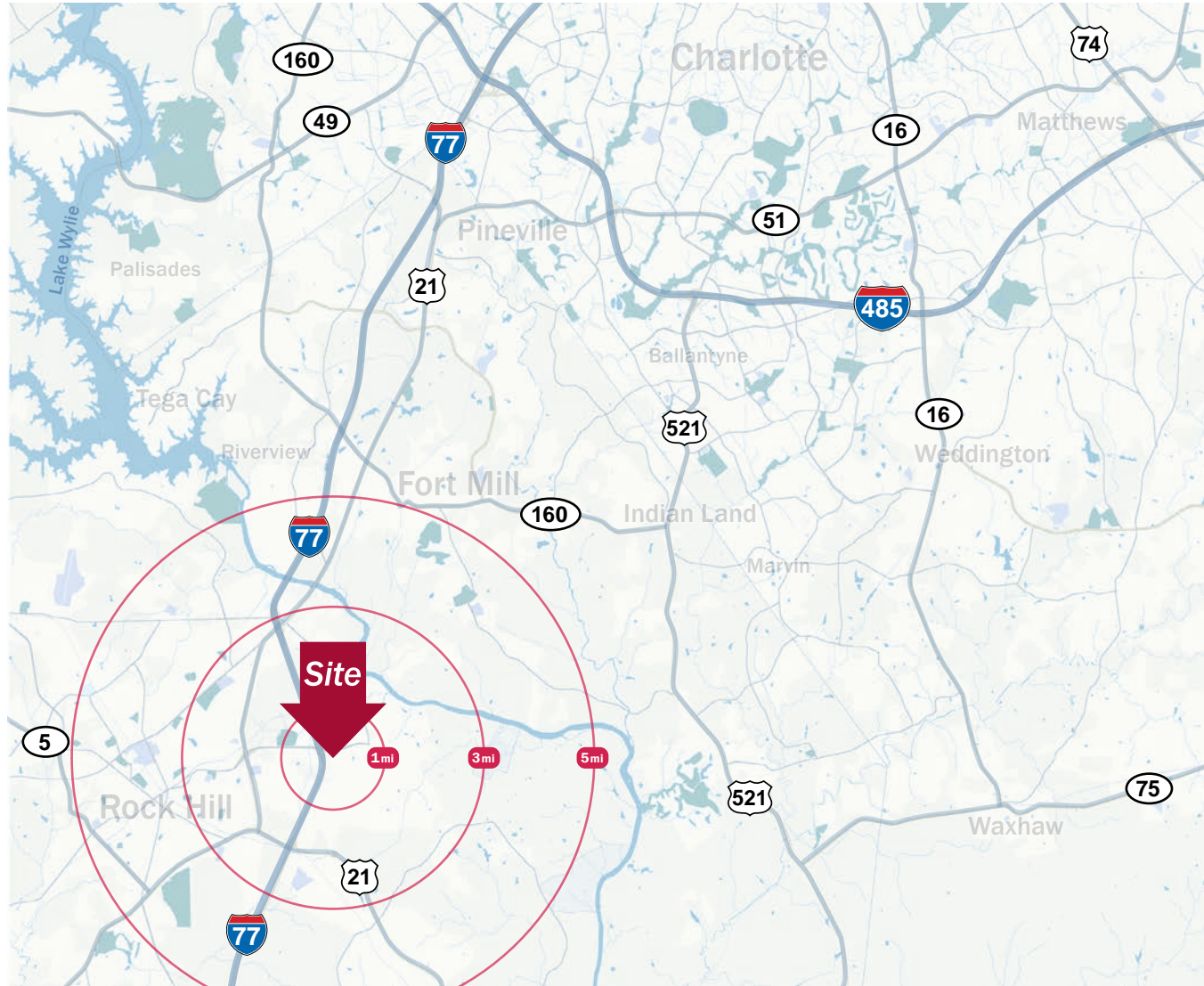
Source: Esri® 2025

	1 mile	3 mile	5 mile
Population	5,536	31,785	96,513
Growth Rate	0.44%	0.77%	1.53%
Avg. HH Income	\$77,080	\$93,907	\$97,847

### Traffic Count

Source: SCDOT

	AADT
Dave Lyle Blvd	42,000 (2025)
Old Springdale Rd	5,500 (2025)



Davis Kirby  
Broker

(704) 367 5018  
dkirby@mpvre.com

Robbie Adams  
Director of Retail

(704) 248 2108  
radams@mpvre.com

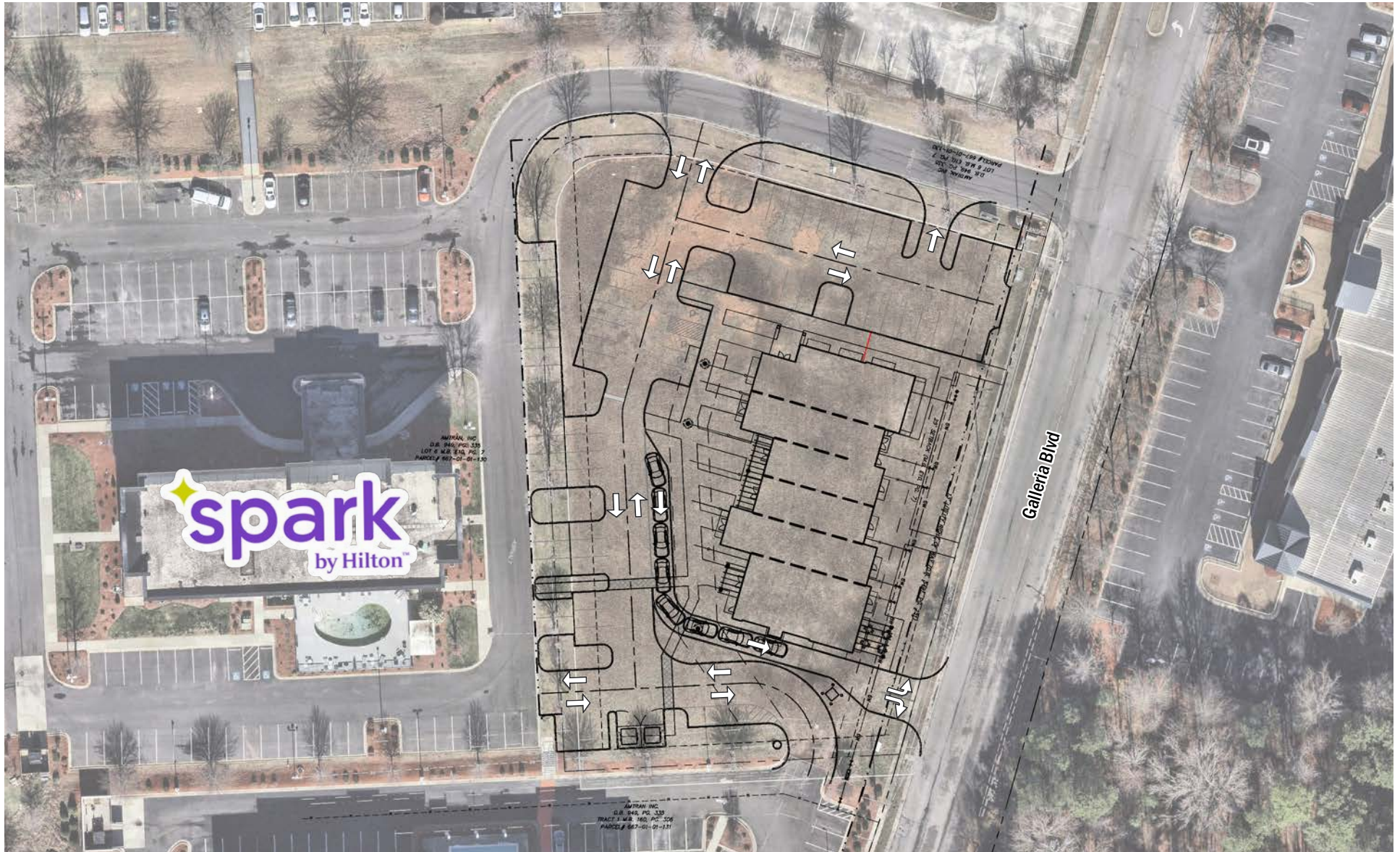
2400 South Boulevard | Suite 300  
Charlotte, NC 28203

mpvre.com

# Galleria Blvd Retail

780 GALLERIA BLVD, ROCK HILL, SC 29730

## Preliminary Site Plan & Aerial



Davis Kirby  
Broker

(704) 367 5018  
dkirby@mpvre.com

Robbie Adams  
Director of Retail

(704) 248 2108  
radams@mpvre.com

2400 South Boulevard | Suite 300  
Charlotte, NC 28203

[mpvre.com](http://mpvre.com)

# Galleria Blvd Retail

780 GALLERIA BLVD, ROCK HILL, SC 29730

## Market Aerial



This GIS data is deemed reliable but provided "as is" without warranty of any representation of accuracy, timeliness, reliability or completeness. This map document does not represent a legal survey of the land and is for graphical purposes only. Use of this data for any purpose should be of acknowledgment of the limitations of the data, including the fact that the data is dynamic and is in a constant state of maintenance, correction, and update.



Davis Kirby  
Broker

(704) 367 5018  
dkirby@mpvre.com

Robbie Adams  
Director of Retail

(704) 248 2108  
radams@mpvre.com

2400 South Boulevard | Suite 300  
Charlotte, NC 28203

mpvre.com

# Galleria Blvd Retail

780 GALLERIA BLVD, ROCK HILL, SC 29730

Renderings



**Davis Kirby**  
Broker

(704) 367 5018  
dkirby@mpvre.com

**Robbie Adams**  
Director of Retail

(704) 248 2108  
radams@mpvre.com

2400 South Boulevard | Suite 300  
Charlotte, NC 28203

[mpvre.com](http://mpvre.com)



Working Together

Medical | Industrial | Retail | Land | Investment | Office

contact

**Davis Kirby**  
*Broker*

(704) 367 5018  
dkirby@mpvre.com

**Robbie Adams**  
*Director of Retail*

(704) 248 2108  
radams@mpvre.com

2400 South Boulevard | Suite 300  
Charlotte, NC 28203

[mpvre.com](http://mpvre.com)