

Office and Retail Space for Lease



Lake Park Town Center

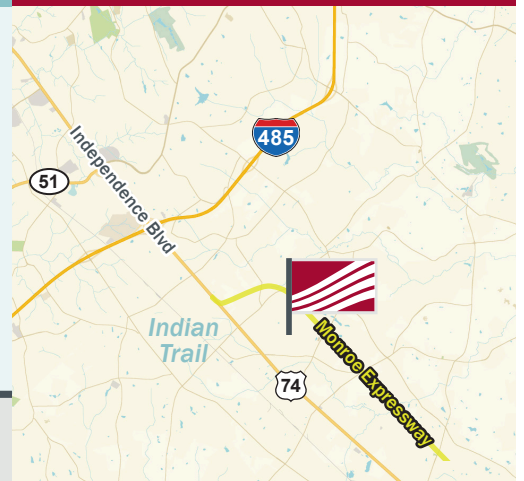
Creft Circle & Meeting Street, Lake Park, NC



Office and Retail Space

- 295 - 2,232 RSF of space available
- Well located, mixed-use building in the town of Lake Park, Union County
- Easily accessible from Independence Blvd/Hwy 74 and the Monroe Expressway

For Lease



Pricing

See Pages 3-4

Demographics	1 mile	3 mile	5 mile
2020 Population	8,499	38,183	92,612
2010 - 2020 Growth Rate	1.04%	2.34%	1.71%
2020 Avg. HH Income	\$88,875	\$92,178	\$102,188

Contact

Ian Bruce
704.561.5270
ibruce@mpvre.com

► Site Aerial

Lake Park Town Center
Creft Circle & Meeting Street, Lake Park, NC

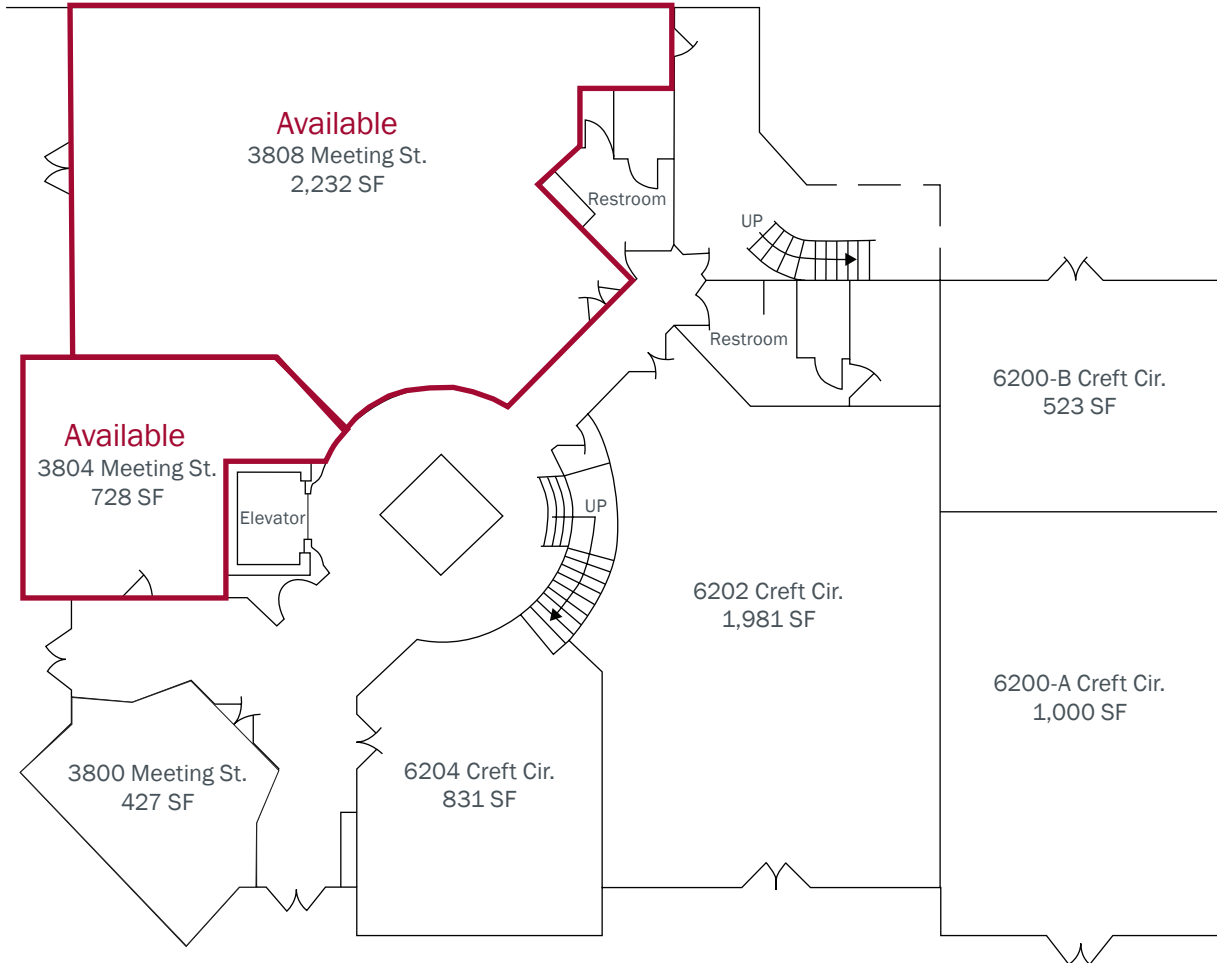


This GIS data is deemed reliable but provided "as is" without warranty of any representation of accuracy, timeliness, reliability or completeness. This map document does not represent a legal survey of the land and is for graphical purposes only. Use of this data for any purpose should be of acknowledgment of the limitations of the data, including the fact that the data is dynamic and is in a constant state of maintenance, correction, and update.

► Floor Plan & Availability

Lake Park Town Center
Creft Circle & Meeting Street, Lake Park, NC

Building 1, Floor 1

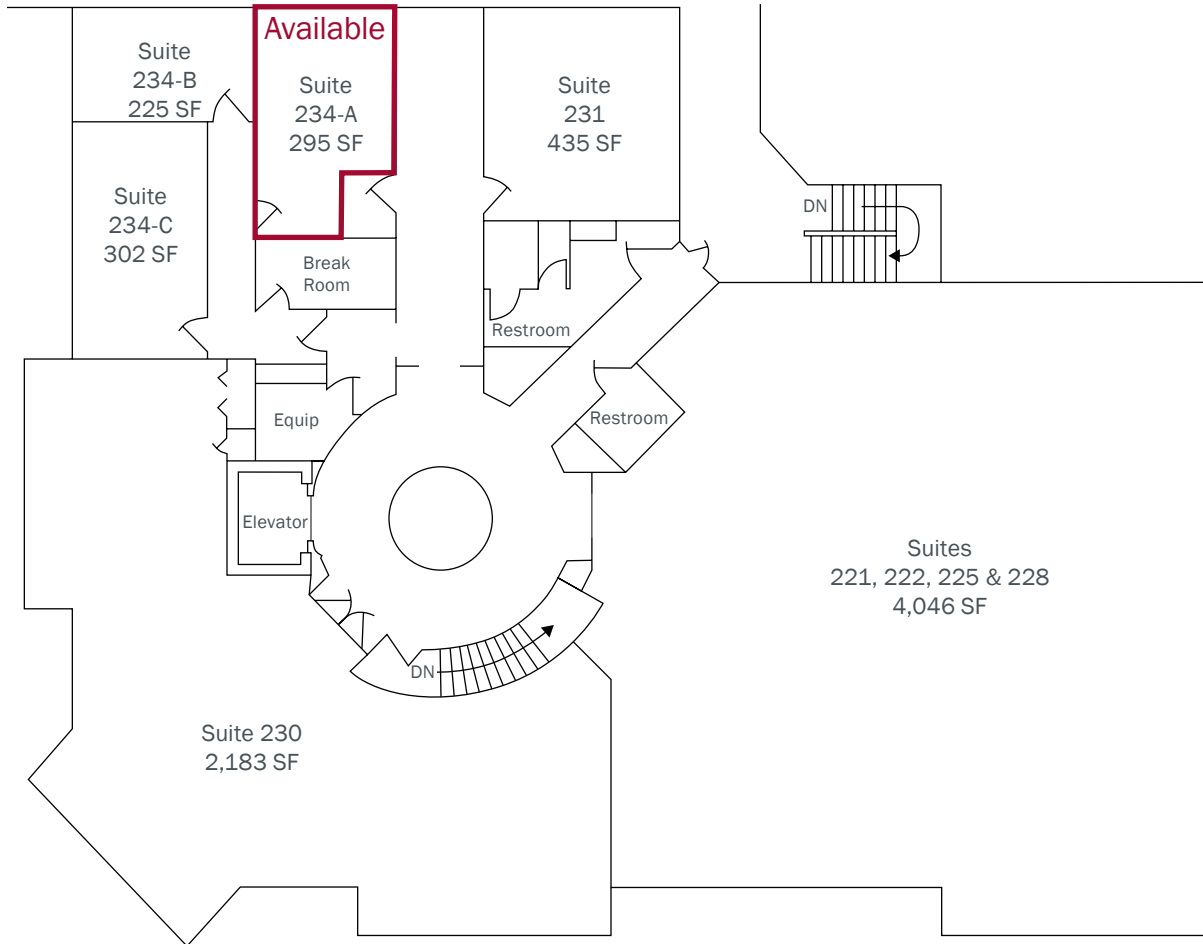


Address/Suite #	Type	Square Footage	Price
3808 Meeting Street	Retail	2,232 RSF	\$20/SF
3804 Meeting Street	Office	728 RSF	\$20/SF

► Floor Plan & Availability

Lake Park Town Center
Creft Circle & Meeting Street, Lake Park, NC

Building 1, Floor 2



Address/Suite #	Type	Square Footage	Price
Suite 234-A	Office	295 RSF	\$525/Mo

For complete property listings, visit www.mpvre.com.



2400 South Blvd., Suite 300 Charlotte, NC 28203 mpvre.com